



Summer 2020 Region 3 Agronomy Update

Levi Lehmkuhl, Region 3 Agronomy Account Manager

Right now, the agronomy team has started spending time doing yield predictions. Corn looks to be good across the whole region and is mostly right on the edge of black layer. One thing that has really stood out this year is that the fields that were sprayed are keeping their stay-green, and the non-sprayed fields are heavy with disease, especially southern rust. Beans have a lot of good potential, but one more rain sure would help set the top clusters up for success. Bean yields look to be promising but until the combine rolls, we won't know just how good they are. There seems to be a fair amount of Sudden Death Syndrome that has shown up across

the geography. It's been present in places we have historically seen it, as well as many new places because the conditions were favorable this year for it. For now, we are wrapping up some test plot events as well as prepping for harvest.



2020 COVER CROP PROGRAM

Our Hagie machines are out in the field planting cover crops! Talk to your Agronomy Account Manager about cost share options available for those looking to plant in the Delaware, Mid-Kansas or Tuttle Watersheds.

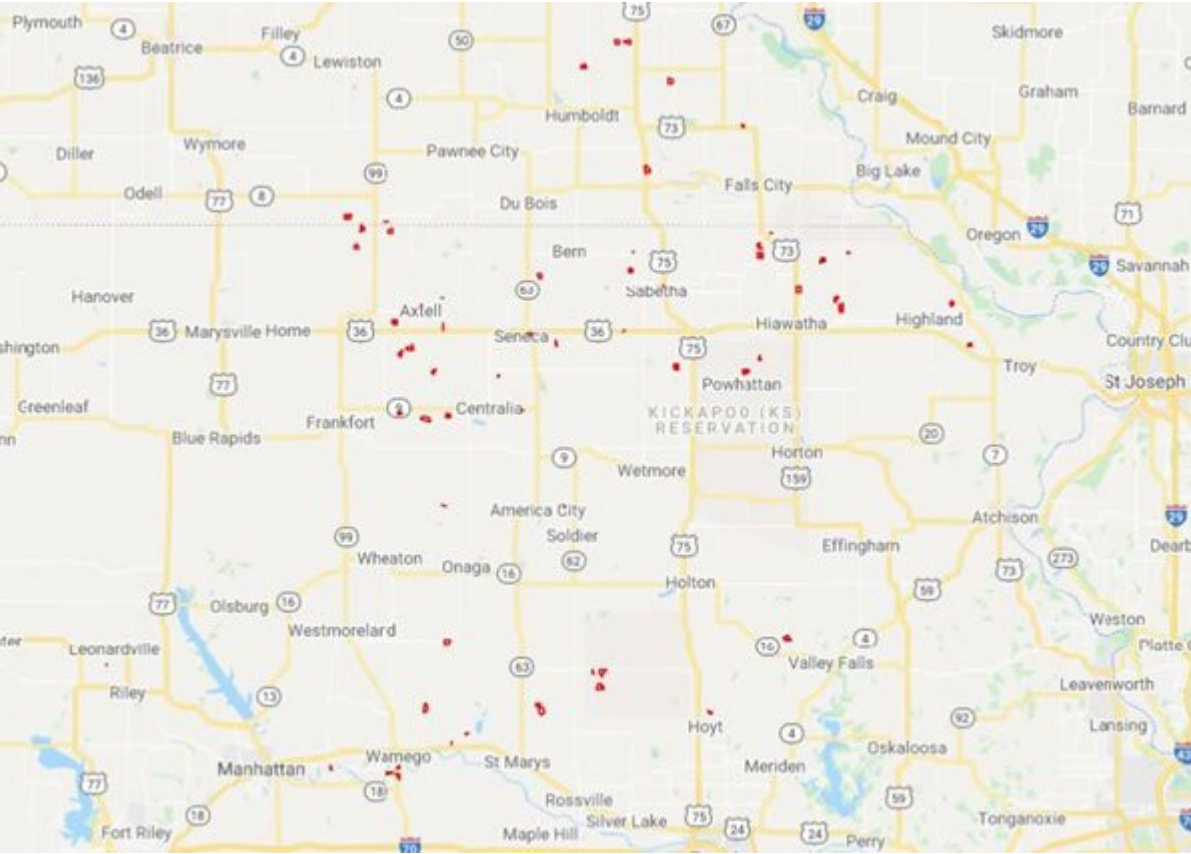
[Read About Program Here](#)



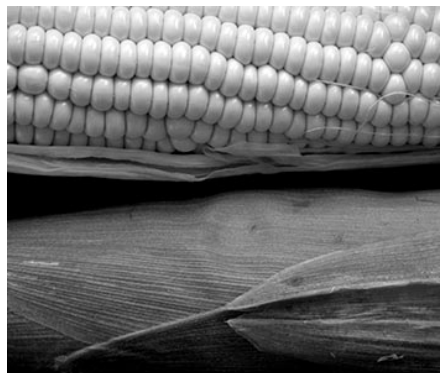
2020 Local Solutions Trials

Talk to your local Agronomy Account Manager or Digital Ag & Services Specialist for information on trials in your area!

[Watch Our Digital Plot Tour](#)



Planning For Fall



Top 4 Tips When Planning Your Fall Nitrogen Application

Nitrogen management is essential to prevent nutrient loss, maximize yield potential and optimize economic return — it's especially important when your nitrogen program includes a fall application.

[Read More](#)

5 Steps to Help Determine Harvest Order

It's hard to believe, but harvest is just around the corner. At this point in the season, your goal should be to protect yield potential by managing harvest order effectively. Here are five tips to help make harvest order work in your favor.

[Read More](#)



Ag Partners Coop
201 North 6th St
Seneca, KS 66538