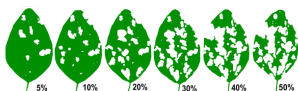




Economic Thresholds of Insects in Crops



Nicholas Blevins, Ag Partners Agronomist

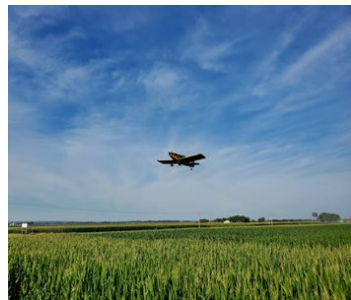
Now is the time to ask yourself, "what is my economic threshold when it comes to insect damage and will it pay when spraying insecticides with fungicides?" This has been a common question since Japanese beetles, stink bugs, bean leaf beetles, and thistle caterpillars have started showing up in fields over the last few weeks. Lately, the weather in our area seems to be bringing out all the damaging insects we've seen in the western Corn Belt.

[Read More](#)

Summer Update: Ag Partners Southern Region

By Ryan Petersen, Sales Agronomist/CCA

Crops in the southern region of the Ag Partners footprint along the Arkansas River Valley are looking really good so far this year, considering all the early challenges we had to work through. There is strong



yield potential for corn and soybeans going forward, but we have a way to go before we can fill the grain bins.

[Read More](#)

Propane Contracts Due July 31, 2019



Don't forget to send in your signed propane contracts, along with your prepayment or deposit, by Wednesday, July 31, 2019. If you have not received a contract, or have any questions on contracting, please contact our main office at 877-336-6153

MyGrower is Now Live

MyGrower is a powerful tool that enables growers to seamlessly access vital, real-time information from their personal device anywhere, anytime.

[Learn More](#)



What is MyGrower?

MyGrower is a powerful tool that enables growers to seamlessly access vital, real-time information from their personal device anywhere, anytime.

- Daily field, contact, and weather
- Income and expense balances
- Crop energy
- Expenses
- Marketing balances
- News



Ag Partners Coop
201 North 6th St
Seneca, KS 66538