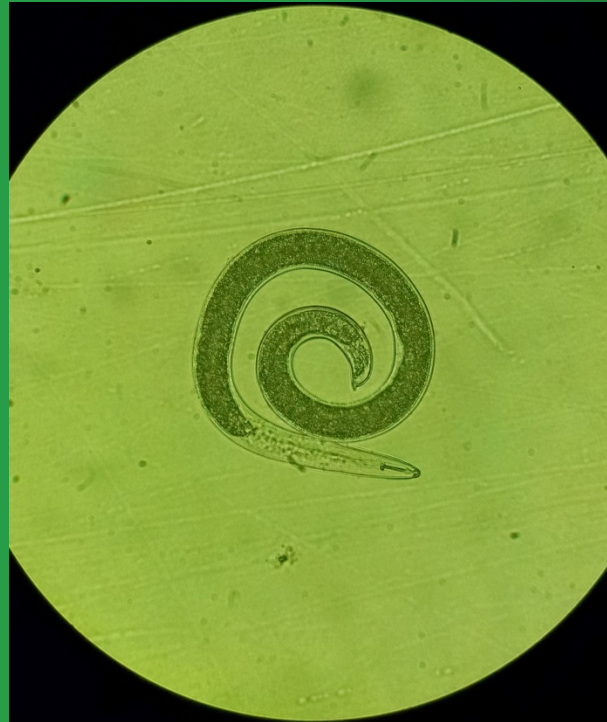


# Nematode Testing Made Easy



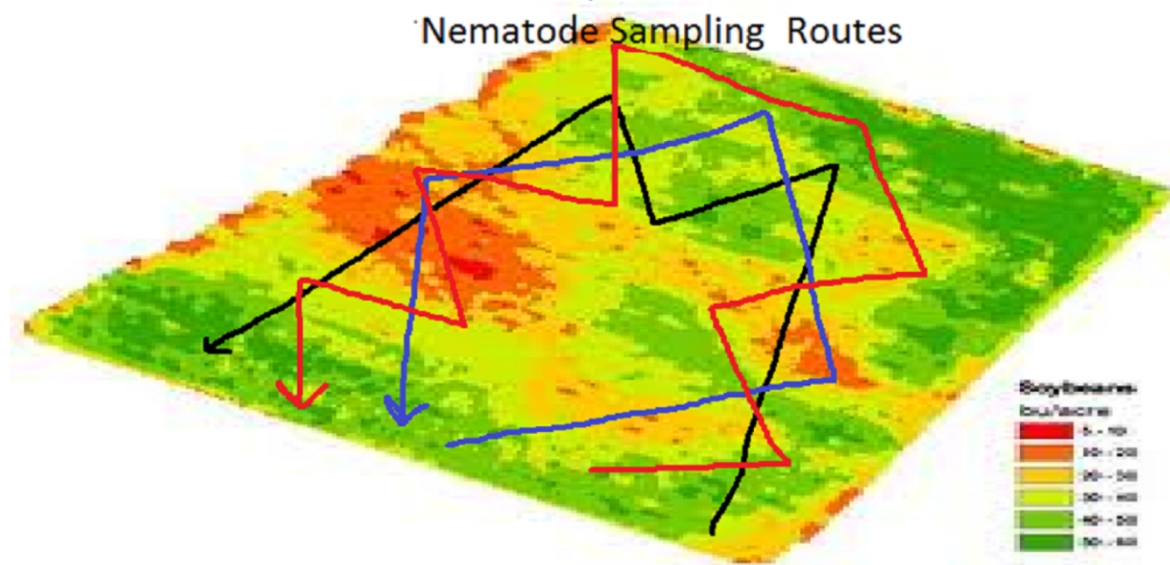
# Important Points to Consider

- Sample at the proper time
- Have the right tools
- Take 15-25 samples/composite
- Keep the samples moist and cool
- Complete [our submission form](#)
- Submit immediately

# When to Sample

- Sample for nematodes at late vegetative to early reproductive stages.
  - In Wisconsin, this is generally mid-June to early August.
- Why?
  - This is when plant parasitic nematodes will be at their highest, most active population levels.

# Sampling Routes: Don't agonize over it

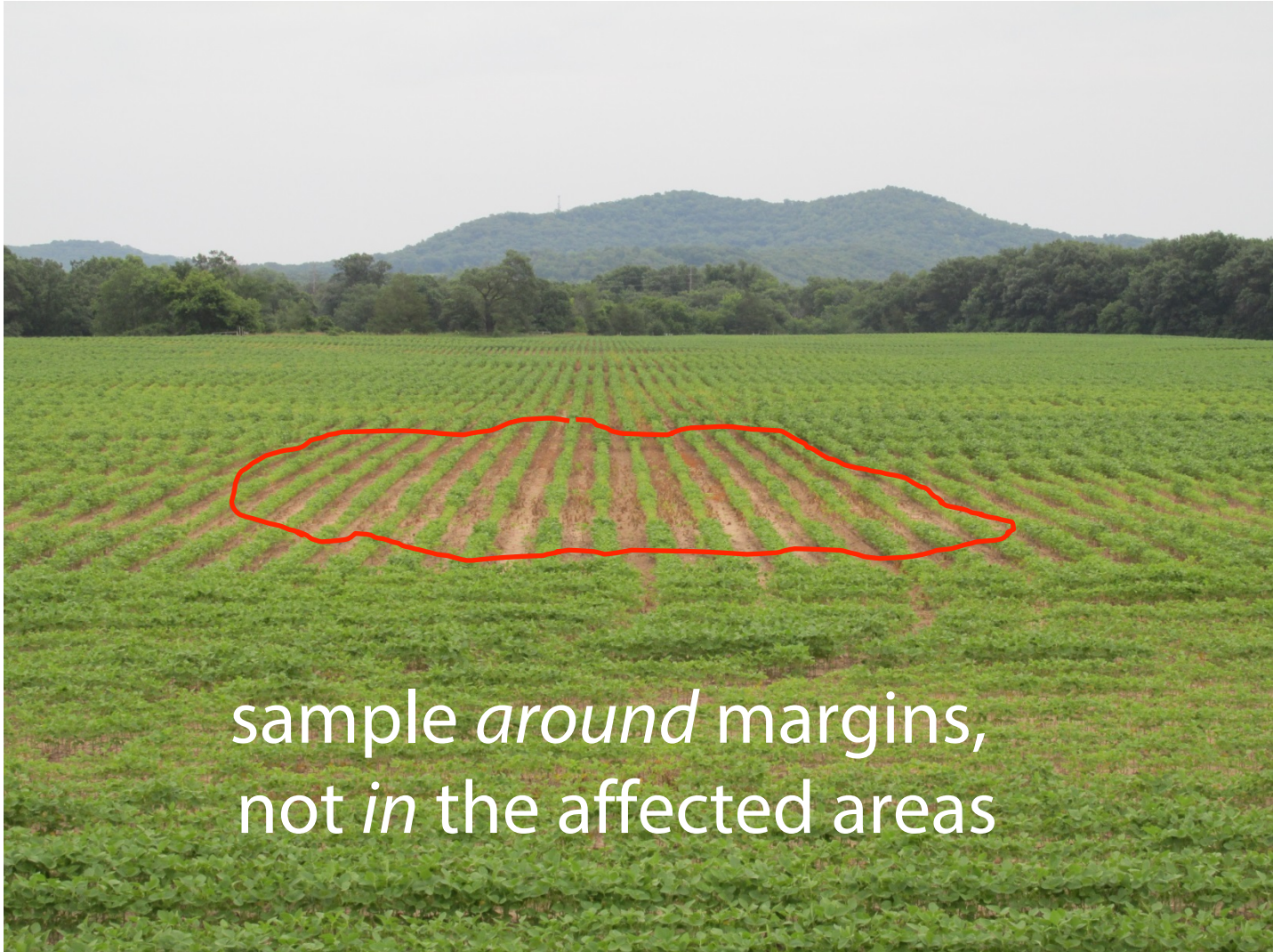


Take a minimum of 25 subsamples per field, or one subsample per acre to make a composite.

Just ensure that you get a representative composite



# Troubleshooting



sample *around* margins,  
not *in* the affected areas

# The Tools

- Bucket
- Soil probe or shovel
- Quart size zip-lock bags
  - plastic or plastic lined bags are best
- Ice chest (always keep the samples cool)
- Sample submission form
  - [Click here for the Sample Submission Form](#)
  - Or go to allied.coop → Agronomy → Pest Pros → Nematode Lab → “Lab Sample Submission Form”





Use a soil probe or shovel to sample plants

With a probe sample between plants







**Or, if you're  
using a shovel,  
target 4-6" from  
plants**





Expose the  
moist, cool soil  
that is 4-6" deep

A close-up photograph of a person's hand holding a small amount of dark, moist soil and some roots. The hand is positioned in the center-left of the frame, with the palm facing upwards. The soil is dark brown and appears to be clumpy. Some roots are visible, extending from the soil. The background is dark and out of focus, showing some green foliage. The lighting is soft, highlighting the texture of the skin and the soil.

**Grab a small hand-full of soil and roots at each location and composite with the other sample locations.**

1. Shovel method allows a soil and root test to be done.
2. Probe method allows only a soil test.





**GROWER  
FIELD-SECTION  
CROP  
DATE**

**"PROPER" BAG  
LABELING  
STORE BELOW 50°F**





Plainfield Farms  
P.O. Box 123  
Plainfield, WI 54966

10/1/2012

### Nematode Report

Sample ID	Sample	Crop	Lesion	Nematodes/Per 100CC			Other	Risk
	Date		GRDW	Lesion	Dagger	Lance		
Plainfield Farms								
1-1	7/2012	Corn		420			79St	MH
3	7/2012	Corn		60			799St,199S <sub>l</sub>	MH
Poor Comp 3-2	7/2012	Corn		0	6	60		M
Ck#1	7/2012	Corn		75	64	204	75St	MH
Good	7/2012	Corn		0			72Sp	L
Gehm 1	7/2012	Corn		81			18Sp	L
No Grass 1	7/2012	Corn		55			187Sp	LM
1 Good	7/2012	Corn		22	11		55Sp	LM
1 Poor	7/2012	Corn		44			198Sp	LM
Bruce B1	7/2012	Corn		0	320	20	420Sp	VH
206666-#2	7/2012	Corn		20			640St,100S <sub>l</sub>	M
206666-#3	7/2012	Corn		11	44		560St	M

The recommendations made are based solely on the test results. Errors in sampling or sample handling can have a major impact on the results of the test. Care must be taken to insure that a representative sample is taken at the proper time, is well mixed, and is properly stored prior to submission. Pest Pros assumes no liability for recommendations made, which are intended as a management guide only.

# Expect a report within 7days with a Risk Rating