

On The Radar



July 19th , 2024

Status by Crop

Corn: V10-VT

Soybeans: V4- R1.5

Potato: 100% canopy; early tuber bulking – some early varieties already vine killed

Cabbage: cupping-heading

Carrots: 1 true leaf- 9 true leaves

Blacklight and Pheromone Traps

Blacklight Trap:

Grand Marsh, WI: 459 Western Bean cutworm
2 Dingy cutworm
1 True armyworm
2 cabbage Loopers
1 Celery looper
3 Variegated cutworm

Pheromone Traps:

Almond, WI: 62 western bean cutworm moths
Plainfield, WI: 2 diamondback moths, 0 looper moths
Grand Marsh, WI: 19 Western bean cutworm moths
Coloma, WI: 1 diamondback moth, 3 cabbage loopers
Plover, WI: 19 Western bean cutworm moths



Corn

Western Bean Cutworm

Observations of WBCW egg masses have increased significantly in the past week. We have also observed first egg hatch. These tiny larvae will crawl up to the top of the plant and then eventually fall onto the silks and feed towards the ear.



Corn

Northern corn leaf blight lesions have been found at the beginning of this week on a few lower leaves.

NCLB has an iconic cigar shaped lesion that is tan in color and can darken when spores develop. Size of the lesion can vary due to the variety's reaction to the infection – typically ranging from 1-6" in length.



Soybean – White Mold



As a majority of soybeans are at the R1 stage, a lot of fields are getting a fungicide spray this week or next, specifically targeting white mold.

Potato

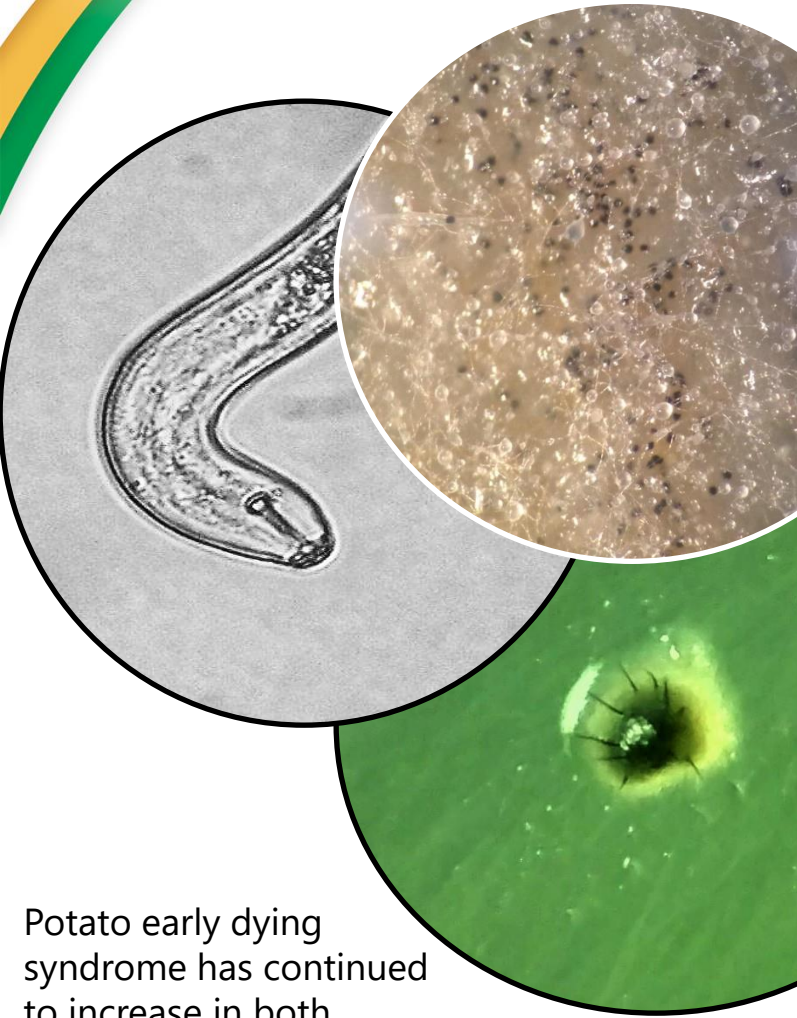
On the look-out for potato leafhoppers in our sweep net counts as increased populations can lead to hopper burn due to the adult and nymph feeding.

Symptomology could be easily identified as a nutrient deficiency if leafhopper levels aren't taken into account.



Example of what hopper burn can look like – begins with leaf tip yellowing that can progress to reddening/purpling.

Potato Early Dying Syndrome



Potato early dying syndrome has continued to increase in both incidence and severity over the course of this past week.

Carrots

More aster leafhopper sprays have begun in the carrot fields.

Aster leafhopper control in fields is crucial to the marketability of the carrots, as they can transmit aster yellows amongst plants, which causes woody and bitter taproots.



Cabbage

Increase of imported cabbage worms have been found in a few fields- particularly on edges.

Pictured is the size of a relatively small caterpillar feeding on cabbage and one on a person's fingertip- easily identified when this small by their hairiness.

