

On The Radar



August 5th, 2022

Status by Crop

Corn: R1 (silking)–R3 (milk)

Soybeans: R3 (beginning pod)-R5.5 (mid-pod fill)

Potato: 100% canopy; canopy starting to senescence – start of harvest on early varieties

Cabbage: cupping – 10” diameter heads

Carrots: 6 true leaves – 100% canopy

Blacklight Traps

Hancock, WI:

5 day interval –

1 celery looper

2 day interval –

nothing of consequence

Grand Marsh, WI:

5 day interval –

24 western bean cutworm

1 celery loopers

2 day interval –

12 western bean cutworm

2 dingy cutworm



Western bean cutworm moths are on the decline.

Corn – Spider mites

Spider mites typically do not reach economic thresholds in corn as they have several natural enemies, but these predatory insects can also be affected by previous broad-spectrum insecticide sprays. Spider mites are known to appear in dryer conditions and near grass field edges.

Spider mites are very difficult to observe with the naked eye as they are about the size of finely ground black pepper.

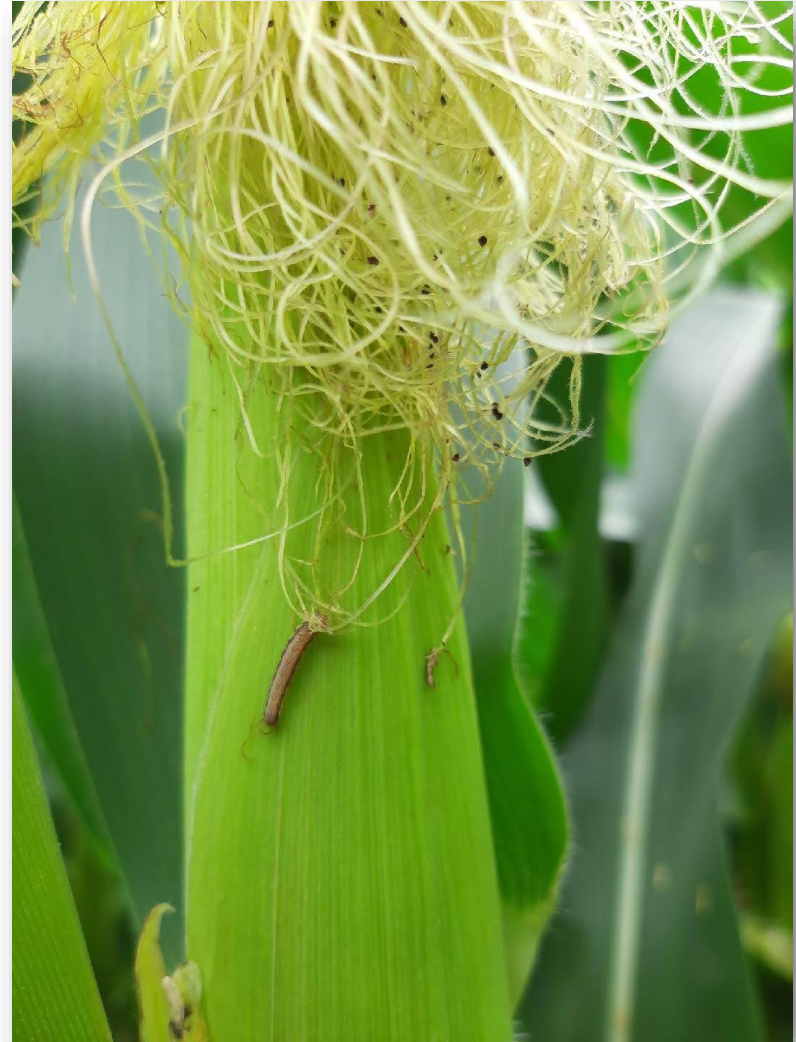
Looking for plant damage (stippling on leaf & yellowing), degree of damage (%), and what leaves are affected (ear leaf or lower leaves) help determine how spider mites are managed.

There are two types of spider mites that can be found: two spotted and the banks grass mite – typically we see two spotted.



Corn – Earworm

Corn earworms found this week – they can feed on foliage but are more-so problematic because they will feed on tips of corn ears.



Potatoes – Early Blight

As the canopy health declines due to nutrient resources going to tuber bulking, early blight lesions are starting to creep further up the canopy.

Mixes of broad-spectrum fungicides with another fungicide labeled more specifically for early blight are going on at this time – lots of options, but typically a spray of Provysol, Luna Tranquility, or Revus Top are going out.



Potatoes - Aphids

Low levels of potato aphids are starting to appear in our fields. This is partially due to the systemic insecticide seed treatments no longer protecting the plant.

Management is dependent on timing of infestation and if they are seed or processing/fresh market due to aphids being virus vectors.

The processing/fresh market economic threshold after bloom is 100 aphids/25 leaves.



Cabbage – White Mold



Starting to see some light incidence of white mold – the right-side photo has the black sclerotia present along with the iconic fuzzy white mycelial growth.

Carrots - *Alternaria*

Starting to see a few
Alternaria lesions in
the carrots

