

# On The Radar



August 6, 2021

# Status by Crop

---

Corn: VT (tasseling) – R3 (milk)

---

Soybeans: R4 (full development) - R5 (beginning seed)

---

Potato: Tuber bulking (slightly larger than last week, but not a lot sizing seen)  
early russets largest potatoes at 12-14oz  
chips @ 3" & a smidge bigger diameter potatoes

---

Cabbage: 12" diameter for seed direct and transplants

---

Carrots: 100% canopy

# Pest Pro's Blacklight Traps

**July 30- August 5**

- Grand Marsh, WI
  - 12 western bean cutworm
  - 5 spotted cutworms
- Hancock, WI
  - Trap had technical difficulty, so no count for this week

# Corn – Tar Spot



Several tar spot samples were confirmed in Adams and Waushara County this week.

Favorable Conditions: 60-70 degrees Fahrenheit with high humidity (75%)

Distinguishing traits: pin head sized black lesions that become raised & can have a tan halo around them

If symptoms are observed, an infected leaf sample can be sent to the Pest Pros location to confirm Tar Spot presence.

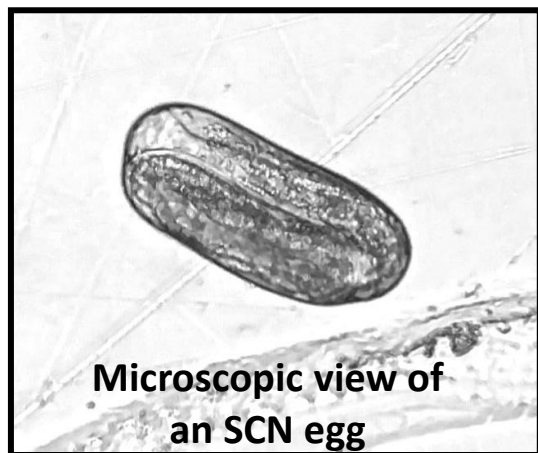
UW Madison Field Crop Pathologist, Damon Smith is collecting samples as well to learn more about Tar Spot in WI.

# Soybean Cyst Nematode (SCN) Testing

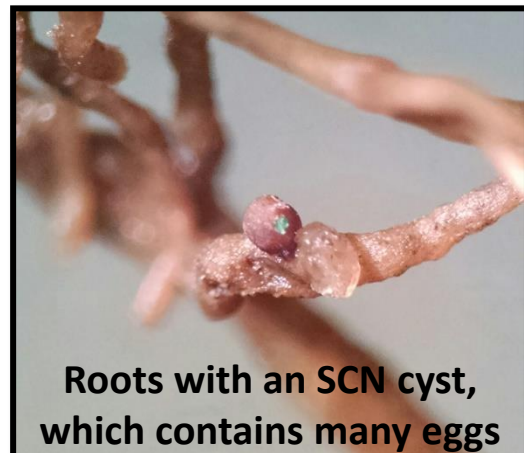
Planning out next year's soybean fields & taking an SCN soil sample from those respective fields is a good start to ensuring a successful soybean crop.

Pest Pro's SCN soil test provides SCN egg counts, SCN counts, as well as other plant parasitic nematode counts. From these nematode populations observed, we provide a risk assessment, which will suggest fumigation or nematicide application if necessary.

Contact your local Allied Agronomy Advisor to schedule your 4 FREE soybean cyst nematode samples to be taken!



Microscopic view of  
an SCN egg



Roots with an SCN cyst,  
which contains many eggs

# Potatoes – Potato Aphids



Starting to see an increase in potato aphids – so far no influx of green peach aphids. Insecticides are more effective on potato aphids and potatoes have higher thresholds to them compared to green peach aphids.

# Potatoes – Tuber Shape

This week & next week is the window of opportunity for getting MH-30 out to help with tuber shape, to have enough time get uniformity in tuber shape.

Vine health is crucial for an MH-30 application to be effective since it does burn the potatoes a bit.



# Potato – MH-30

- **Nickname:** "Crop-Stop"
  - *may badly burn weak canopies or any canopy if applied in hot conditions*
- **Active ingredient:** maleic hydrazide
- **Purpose:** shut down meristematic growth (growth regulator)
  1. To prevent sprouting in storage
  2. To shut down the further growth of small tubers in the set so that only the mid-sized and large tubers get bigger.
  3. To reduce "off-type" characteristics

**Timing is tricky** with MH-30 and the effect of an application will vary based on which specific formulation you choose.



# Carrots

Low disease incidence in carrots so far  
Starting to see more *Alternaria* but keeping our  
eyes out for *Cercospora*.



*Cercospora* lesion



*Alternaria* lesion

# Cabbage



Cabbage  
bulked a lot  
this last week!

# Cabbage – Black Rot

Starting to see black rot in our organic cabbage acres.

Black rot of cabbage is a bacterial disease and is easily spread by contact with infected plants.

Best control is to reduce entering infected areas of the field, reduced irrigation (as feasible as possible) & applications of copper fungicides.

