

# On The Radar



July 30, 2021

# Status by Crop

---

Corn: VT (tasseling) – R3 (milk)

---

Soybeans: R3.5 (mid pod development) - R5 (beginning seed)

---

Potato: Tuber bulking (slightly larger than last week, but not a lot sizing seen)  
early russets largest potatoes at 8oz  
chips @ 2.5-3" diameter potatoes

---

Cabbage: 12" diameter (seed planted); 14" diameter(transplants)

---

Carrots: 50%– 100% canopy

# Pest Pro's Blacklight Traps

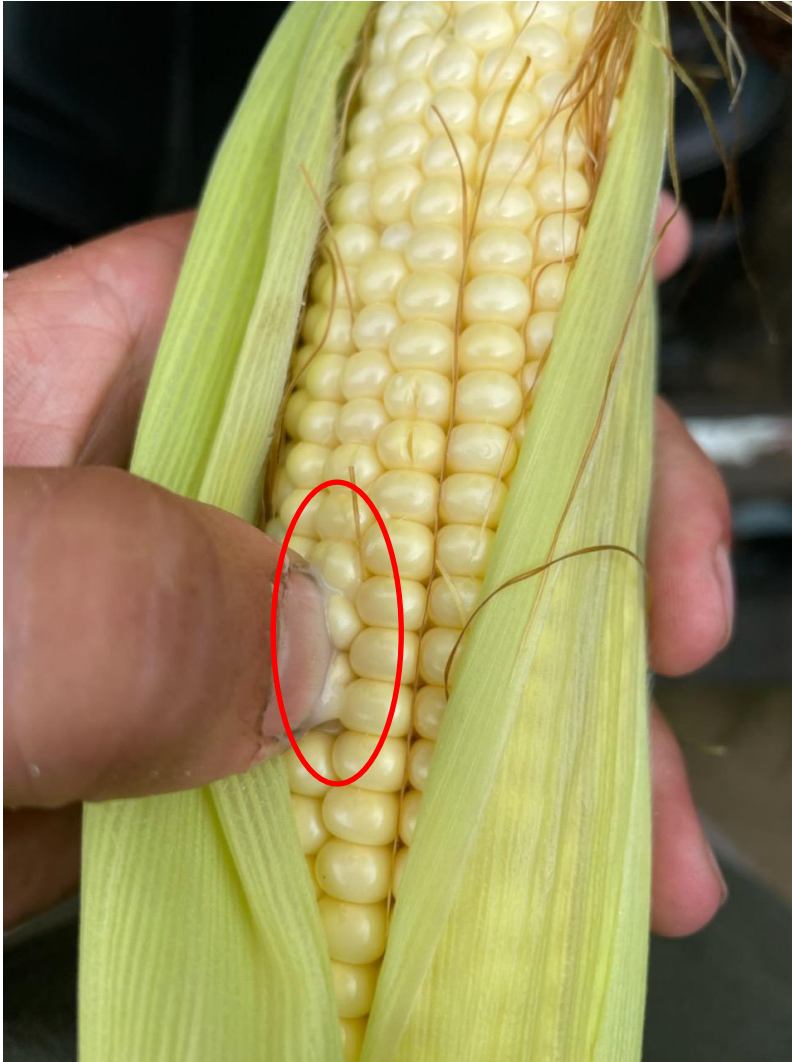
## July 23- July 26

- Grand Marsh, WI
  - 17 western bean cutworm
- Hancock, WI
  - 12 western bean cutworm

## July 27- July 29

- Grand Marsh, WI
  - 21 western bean cutworm
- Hancock, WI
  - 5 western bean cutworm'
  - 1 celery looper

# Corn



We have some corn that has reached the milk stage, which can be easily determined by compressing some kernels – at the milk stage they will exude a milky liquid.

# Corn – Crop Development



Silk (R1)



Blister (R2)



Milk (R3)

# Soybean - *Septoria*



Septoria Brown Spot. D. MALVICK

Image: UMN Extension. Dean Malvick, Soybean Pest Management.

Septoria brown spot has begun to creep from the lower canopy into the middle canopy from our humid/wet warm weather.

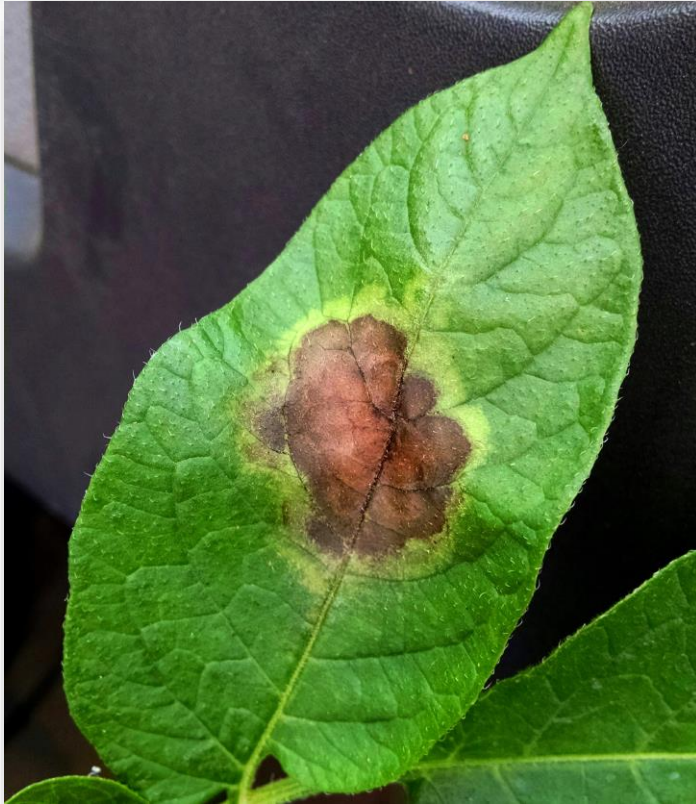
Septoria normally is not yield limiting and can often resemble soybean rust.

# Soybean – White Mold



With the soybean canopy full & humid weather we've had, white mold incidence has increased.

# Potatoes – Late Blight



Late blight lesion view from leaf top – necrotic/brown irregular lesion on foliage and can develop a yellow/chlorotic halo

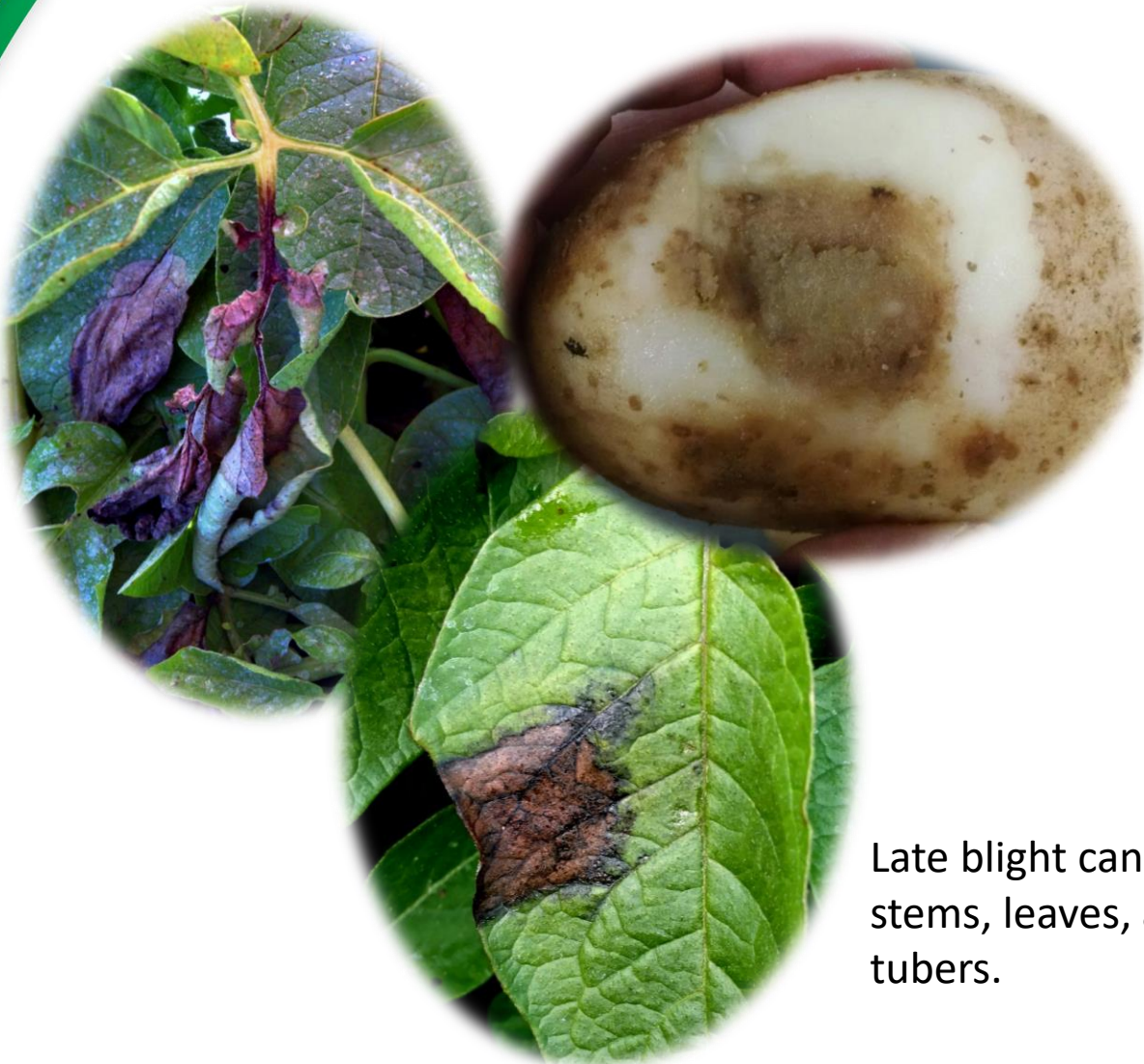


Late blight lesion view of leaf underside – white fuzzy growth along margins of the lesion (sporulation)

US-23 strain of late blight was found earlier this week in a potato field North of Bancroft. This is a metalaxyl/mefenoxam (FRAC Group 4) sensitive type. Good field coverage of foliage with late blight fungicides is key as edges and pivot point regions of field are more susceptible/conducive environments for disease development.



# Potatoes – Late Blight



If you find a suspect lesion, contact your Agronomy Advisors or Pest Pros for sample identification.

Pest Pros works closely with the UW-Extension specialists to get the sample typed when found to help determine correct fungicides.

Late blight can infect stems, leaves, as well as tubers.

# Carrots - *Alternaria*

Low incidence of *Alternaria* leaf blight has been seen in carrots this week - preventative fungicide applications continue.

*Alternaria* lesions resemble *Cercospora* greatly, but as they progress they have an irregular shape.

*Alternaria* develops more on older leaves, whereas *Cercospora* tends to attack younger plants and foliage.



# Cabbage



Low incidence of diamondback moth larva and cabbage loopers this week.

Cabbage is sizing well with the largest heads several inches larger in diameter than a basketball!