

# On The Radar



June 10th, 2022

# Status by Crop

---

Corn: V3-V6

---

Soybeans: V1

---

Potato: 4– 14” tall; earliest planted at tuber initiation/swelling

---

Cabbage: 7 true leaves (seed planted); 12 true leaves (transplants)

---

Carrots: 1<sup>st</sup> true leaf – 3<sup>rd</sup> true leaf

# Blacklight Traps

Hancock, WI:

5 day interval-

- 2 spotted cutworm
- 1 armyworm
- 1 alfalfa looper

3 day interval –

- 1 black cutworm
- 3 celery loopers

Grand Marsh, WI:

5 day interval –

- 3 spotted cutworm
- 1 alfalfa looper

3 day interval –

- 1 corn borer



Still very low quantities found &  
appearance of corn borer in Grand Marsh.

# Corn

Wind damage  
observed this  
week in corn as  
well as an  
increase in  
insect feeding.





# Soybeans

Seed corn maggot damage with little damping-off seen in some fields leading up to 10% population loss.



Damping-off of a soybean seedling



Seed Corn maggot. Photo Credit:  
Marlin Rice  
(IA State University Extension)

# Corn - Herbicide

Some fields that will be at V7-V8 stage by next week are seeing their last herbicide sprays as their canopy will create too much cover for good weed control to occur.

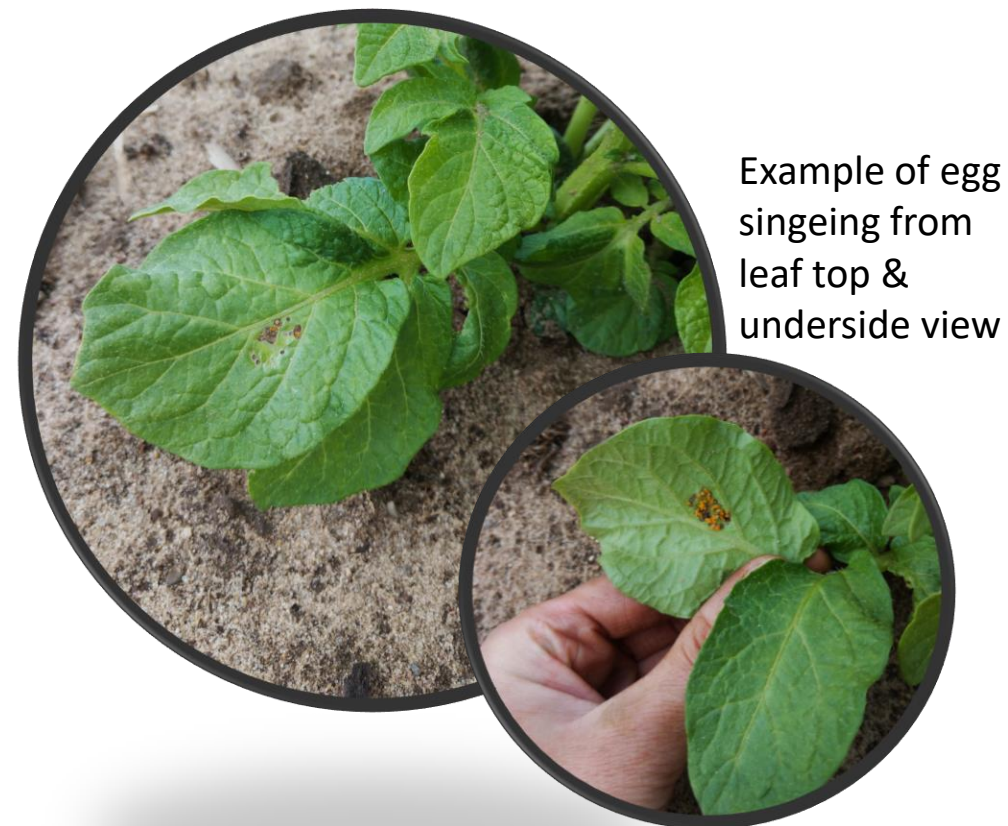




# Potatoes

CO Potato beetle egg progression:

Light orange, dark orange, start to singe plant where eggs attached to foliage, egg hatch



Egg color progression to egg hatch.



# Potatoes – Crop Development

## Tuber initiation & swelling

Very good  
time for the  
soil to  
remain  
moist!



Quarter in photo  
for size  
comparison.  
Approx. 17  
tubers/5 stems  
are developing –  
about 3.4 tubers  
per stem which  
for a russet  
variety is good!



# Cabbage

Finding diamondback moth larva, which are very small pests that require an up-close look at typically the leaf undersides.

