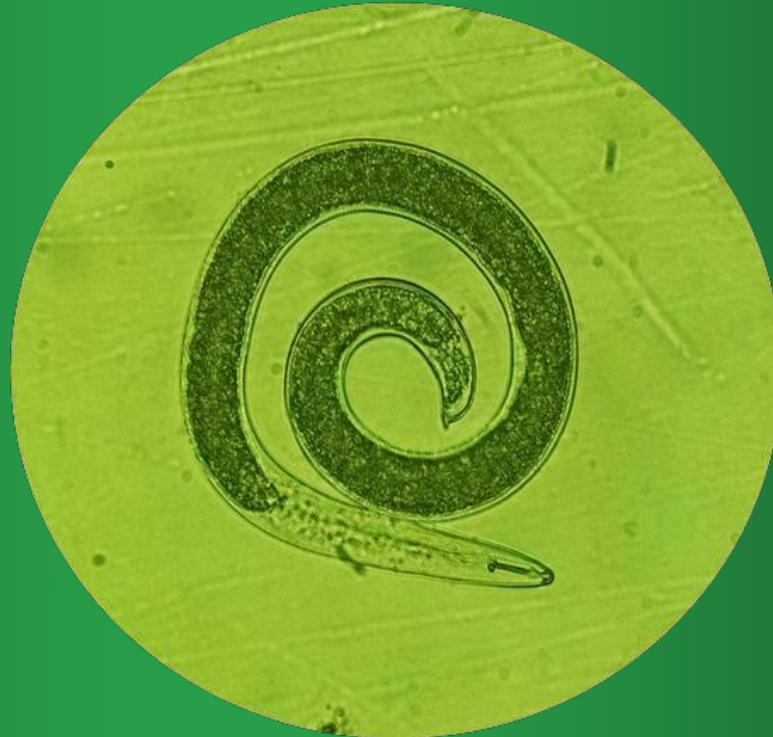


On The Radar



June 17th, 2022

Status by Crop

Corn: V3-V6

Soybeans: V3

Potato: 8– 24” tall; early planted at 75% canopy

Cabbage: 8 true leaves (seed planted); 12 true leaves (transplants)

Carrots: 1st true leaf – 3rd true leaf

Blacklight Traps

Hancock, WI:

4 day interval-

no notable moth pests

2 day interval –

no notable moth pests

Grand Marsh, WI:

4 day interval –

5 spotted cutworm

1 armyworm

2 day interval –

4 spotted cutworm

1 celery looper



Still very low quantities caught overall.

Corn



Cool temperatures when small followed by warmer temperatures leading to buggy- whipping symptomology or accelerated growth syndrome.

The plants don't unfurl properly, but they eventually grown out of it.

Corn

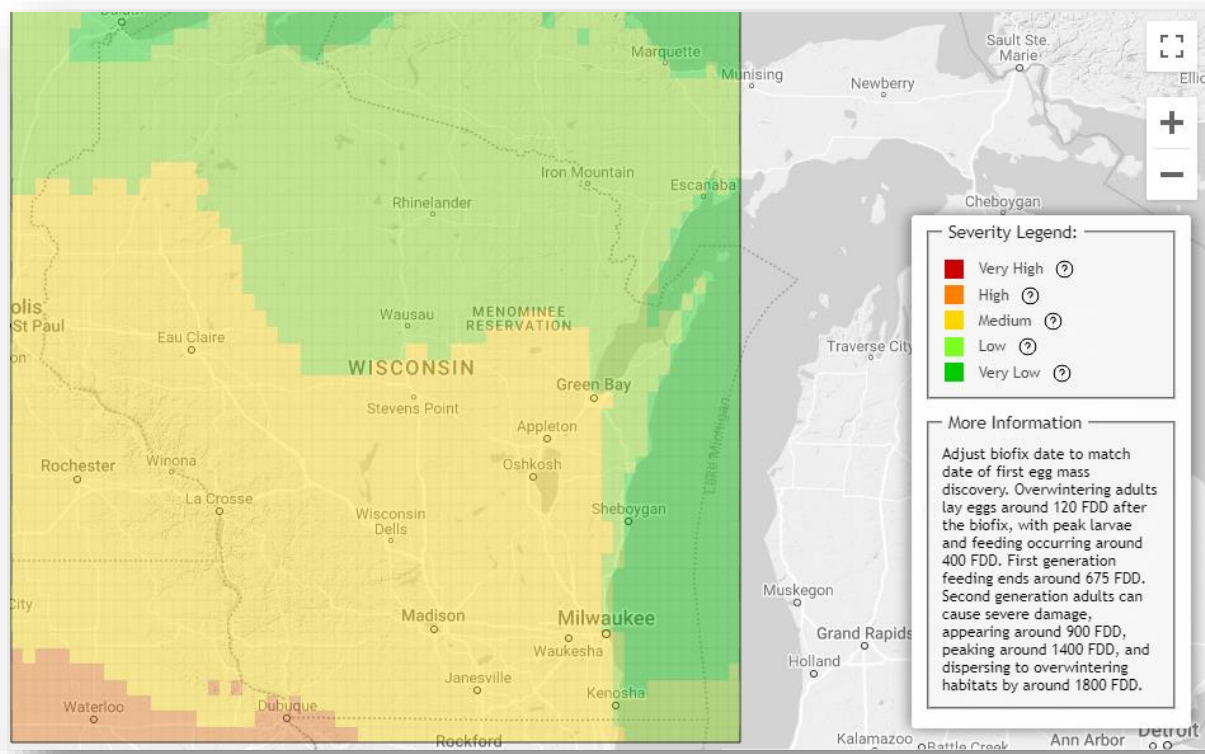
Photo depicting the state of corn in Western WI after the storm system that came through on Wednesday.

Minimal hail damage observed by Pest Pros, mostly just wind injury.



Potato

Check out UWEX page for the Degree Day Calculator Vegetable Disease and Insect Forecast Network (VDIFN): <https://agweather.cals.wisc.edu/>
 Displays insect pressure is in your region map form & double clicking a point on their map will bring up the DDU data for that grid point.



Potato

Across central WI, if eggs were observed as early as May 30, hatch should have begun. The Degree day unit (DDU) accumulation this week & going into next week will really accelerate hatch and larval development.

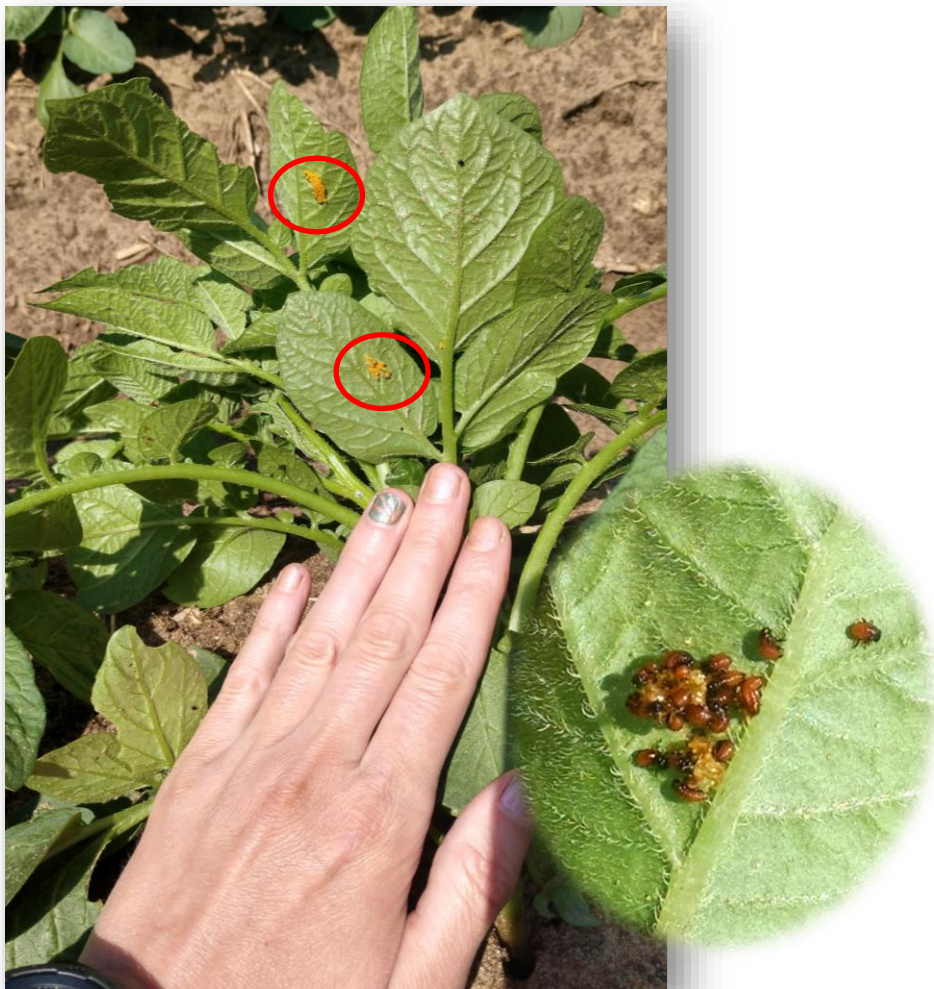
The last two days we accumulated about 25DDU/day.

DDU CO Potato Beetle pressure is based off the first observation of eggs.



185 DDU is when 1st instar larva can be observed.

Potatoes



Flip over plants and look at leaf undersides to find egg masses.

Colorado Potato Beetle egg counts and percent hatch help us know where problematic parts of fields will be as well as when to time the first insecticide (10% hatch target).

$$\% \text{ hatch} = \frac{\# \text{ hatched}}{\# \text{ total egg masses found}}$$

Insect Spotlight: Leafhoppers

Potato Leafhopper

Affected Crop: Potato

(also can be problematic in alfalfa)

Potato Economic Thresholds:

~12 adults/25 sweeps & nymphs present or adult pressure remains 10-14 days

Description: lime green in color, 1/8" long, winged

Damage:

- “Hopper burn”
 - Chlorosis to necrosis of leaf tissue along leaf edges/tip



Adult leafhopper next to a 1st instar CO potato beetle larva



To left: an approx. visual size comparison of a leafhopper to a penny.



“Hopper burn”

Fun Potato Field Find!



A bird nest found by one of the Pest Pros Crop Consultants as she was doing a stand & stem/plant assessment in a field.

Carrots

Major focus for carrots is still weed control & making sure that the carrots are well watered in the heat.

Making sure that herbicide sprays are not being applied in the high heat – early morning and late-night applications to have the best effect & reduced burning of the carrots.



Carrots

The larger carrot's taproots are beginning to turn orange!



Cabbage

The recent weather has not been friendly for the cabbage crop.

We've been seeing some light wind injury even to the larger direct seeded cabbage.

Wind can slightly uproot the cabbage plant, damaging their root system.

