

On The Radar



June 24th, 2022

Status by Crop

Corn: V3-V6

Soybeans: V3-V4

Potato: 12– 24” tall; early planted closing canopy & in early bloom

Cabbage: cupping (seed planted); cupping (transplants)

Carrots: emerging– 6 true leaf

Blacklight Traps

Hancock, WI:

4 day interval-

3 spotted cutworm

2 day interval –

2 spotted cutworm

1 celery looper

Grand Marsh, WI:

4 day interval –

8 spotted cutworm

1 celery looper

2 day interval –

10 spotted cutworm

5 celery looper



Seeing a slight spike in the Grand Marsh trap for Spotted Cutworm moths.

European Corn Borer

We have yet to find ECB adults in our black light traps but they have made an appearance in the DATCAP blacklight traps in counties south of Central WI.

Will begin our scouting for ECB egg masses in corn next week.



Soybeans

Herbicide injury on soybeans, which can slightly resemble a few diseases of soybeans like bacterial leaf blight, which should be uncommon to find at this time and with present weather conditions.



Potato Petiole Nutrient Analysis

Many potato growers make weekly petiole nutrient testing part of their management regime.

Majority of potato fields in Central WI had petiole testing start this week.

This usually takes place for 5-6 weeks beginning around mid-June and ending around mid- to late July.



Potatoes



In some fields, we're still observing a decent amount of CO potato beetle egg masses as some of the later emerging CO potato beetles find the fields.

Potatoes

This can be a tricky time frame where you aren't seeing much for egg masses (because of hatch), but also not catching many 1st instar larva (canopy can shelter/trap when sweeping).

Crucial time to make good visual observations of frequency of 1st instar in the new growth & looking for signs of lower canopy feeding when flipping plants over.



Potatoes



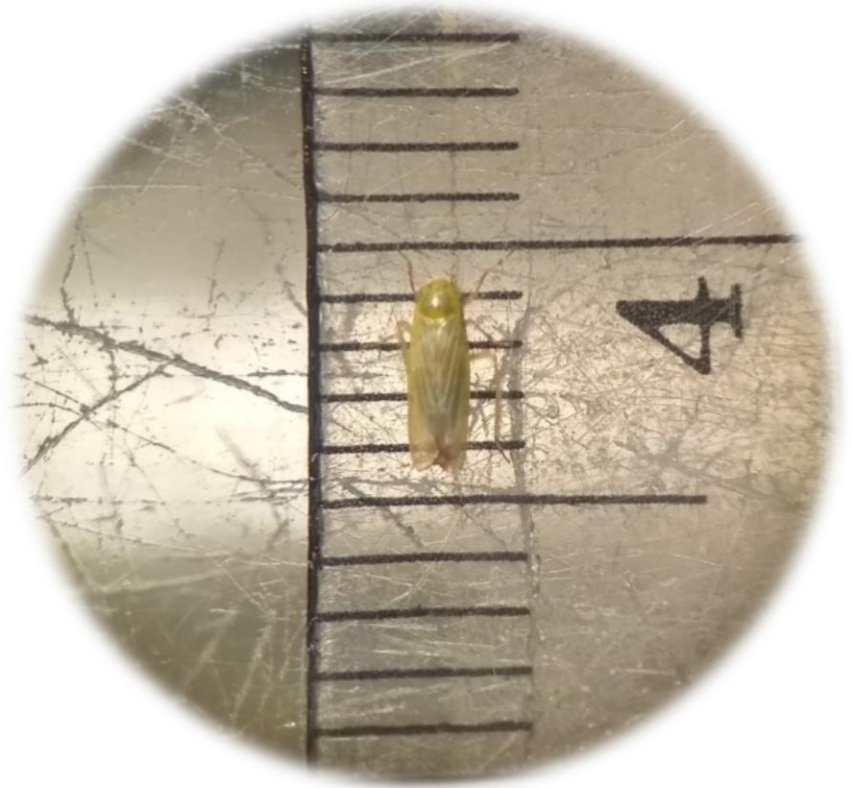
Many of the early planted potatoes are in the stages of early bloom, which must be taken into consideration for insecticides chosen based off their label's bee language.

Carrots – Aster Leafhoppers

Aster leafhoppers just made their appearance the southern portion of the Central Sands.

Influxes are often dependent of groups of leafhoppers from southern states getting swept up into a north bound storm system.

So far very low levels found.



Aster leafhopper under a dissecting microscope.

Cabbage



Cabbage at the cupping stage

Seed planted cabbage are quickly catching up to the transplanted cabbage!

Cabbage

Monitoring fields with crop history for black rot for potential lesions – have found some already this season.

Copper fungicides are the best chemical control as well as irrigating to reduce prolonged periods of damp foliage.

