

# On The Radar



June 21st, 2024

# Status by Crop

---

Corn: V3-V6

---

Soybeans: VE-V4

---

Potato: 12– 24” tall; early planted closing canopy & in full bloom

---

Cabbage: emerging to cupping

---

Carrots: emerging– 6 true leaf

# Insect Traps

## Grand Marsh, WI:

Blacklight Trap – 14 spotted cutworm  
2 dingy cutworm  
2 celery looper  
1 cabbage looper  
3 black cutworm  
2 variegated cutworm  
1 forage looper  
1 corn earworm

Pheromone - 0 western bean cutworm

## Almond, WI:

Pheromone - 0 western bean cutworm

## Stevens Point, WI:

Pheromone - 0 western bean cutworm



# Corn Tissue Sampling

Now is a good time to take corn tissue samples in order to ensure target fertility levels.

For fields where the corn is larger than 12", pull the uppermost collared leaf.



# Corn Side Dress Applications



V2-V3 Sidedress

# Impact of Wet Soil on Soybean Nodulation



Water logged soils can lead to poor nodulation – this can result in a temporary nitrogen deficiency. Once the nodules begin producing sufficient N, green color will return.

# Potato Petiole Nutrient Analysis

Many potato growers make weekly petiole nutrient testing part of their management regime.

Majority of potato fields in Central WI had petiole testing start this week.

This usually takes place for 5-6 weeks beginning around mid-June and ending around mid- to late July.



# Potatoes

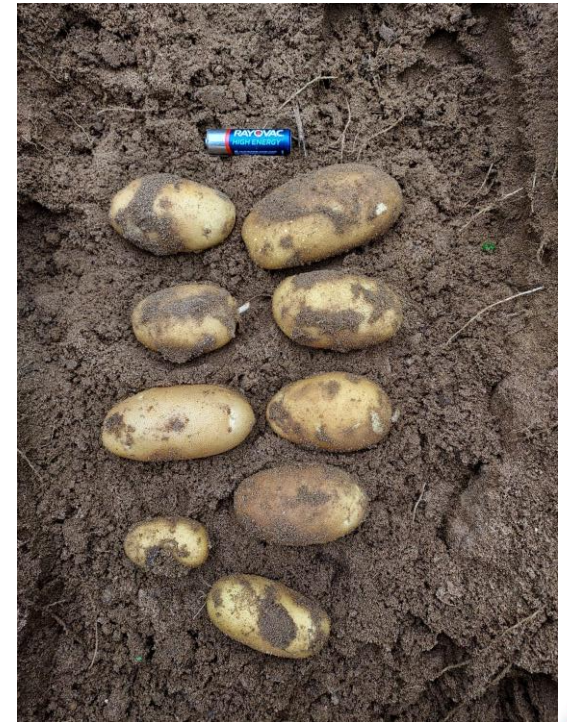


Many of the early planted potatoes are in the stages of early bloom, which must be taken into consideration for insecticides chosen based off their label's bee language.



# Early Reds, Yellows, and Russets

Early potatoes are bulking like mad!



# First Potatoes Vine Killed

- Potatoes are desiccated to “set” skin to get ready for the harvest and packaging process.
- Skin setting can take up to 4 weeks on some varieties.
- This is a variety of creamers or small potatoes that will go directly to grocery stores.

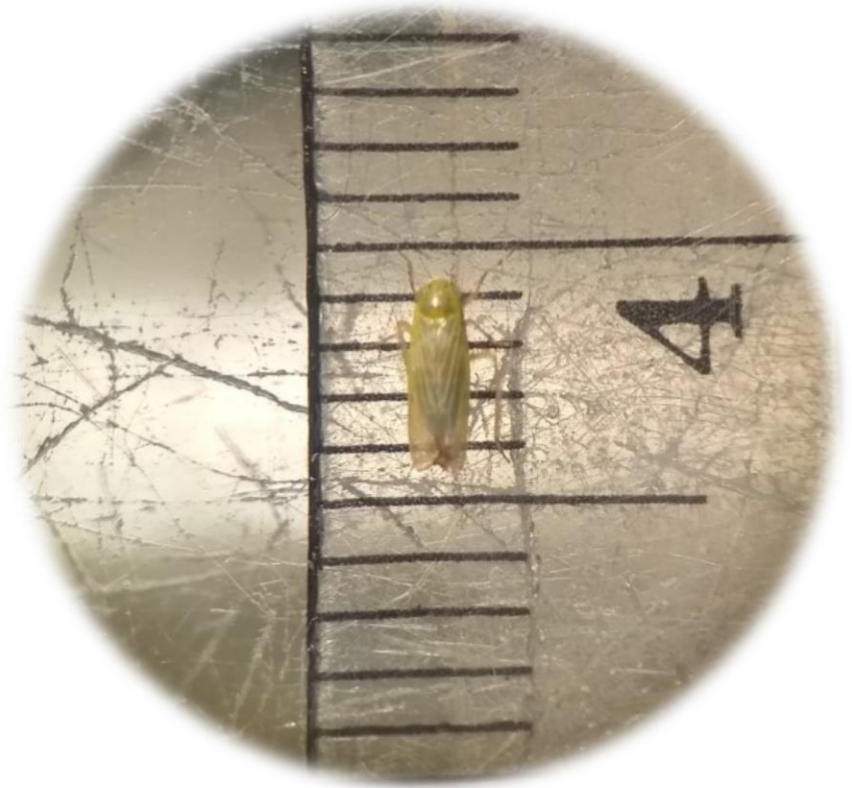


# Carrots – Aster Leafhoppers

Aster leafhoppers just made their appearance the southern portion of the Central Sands.

Influxes are often dependent of groups of leafhoppers from southern states getting swept up into a north bound storm system.

So far very low levels found.



Aster leafhopper under a dissecting microscope.

# Diamondback Moth Cabbage

Serious pest of cabbage.

Although it is a pest of a different crop than Colorado Potato Beetle, it has a similar ability to develop resistance to a diverse array of insecticide chemistries.

We are starting to see an uptick in populations across the central sands.

