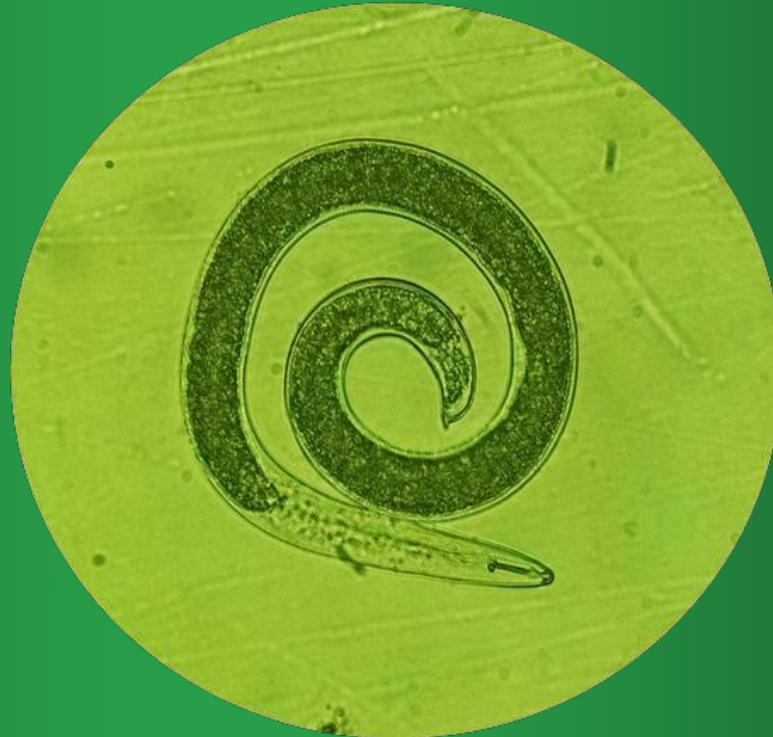


# On The Radar



June 7th, 2024

# Status by Crop

---

Corn: V2-V4

---

Soybeans: Emerging-V1

---

Potato: 4– 24" tall; earliest planted at 1<sup>st</sup> bloom

---

Cabbage: true leaves (seed planted); 9 true leaves (transplants)

---

Carrots: 1<sup>st</sup> true leaf – 3<sup>rd</sup> true leaf

# Blacklight Trap

Grand Marsh, WI:

- 3 Celery loopers
- 4 spotted cutworms
- 1 variegated cutworm
- 1 true army worm
- 1 dingy cutworm
- 3 black cutworms

Still very low quantities found

# Potatoes – Crop Development

## Tuber initiation & swelling

Very good  
time for the  
soil to  
remain  
moist!



Quarter in photo  
for size  
comparison.  
Approx. 17  
tubers/5 stems  
are developing –  
about 3.4 tubers  
per stem which  
for a russet  
variety is good!

# Potato

## Development Status

There are many fields that are entering reproductive and bulking stages too early (i.e. well before 100% canopy)



Especially fields:

- That were planted or hilled late (due to environment)
- Where planting depth was  $>6''$
- That have soil which "seals up" after rainy conditions.

# Potatoes

CO Potato beetle egg development:

Light orange, dark orange, start to singe plant where eggs attached to foliage, egg hatch

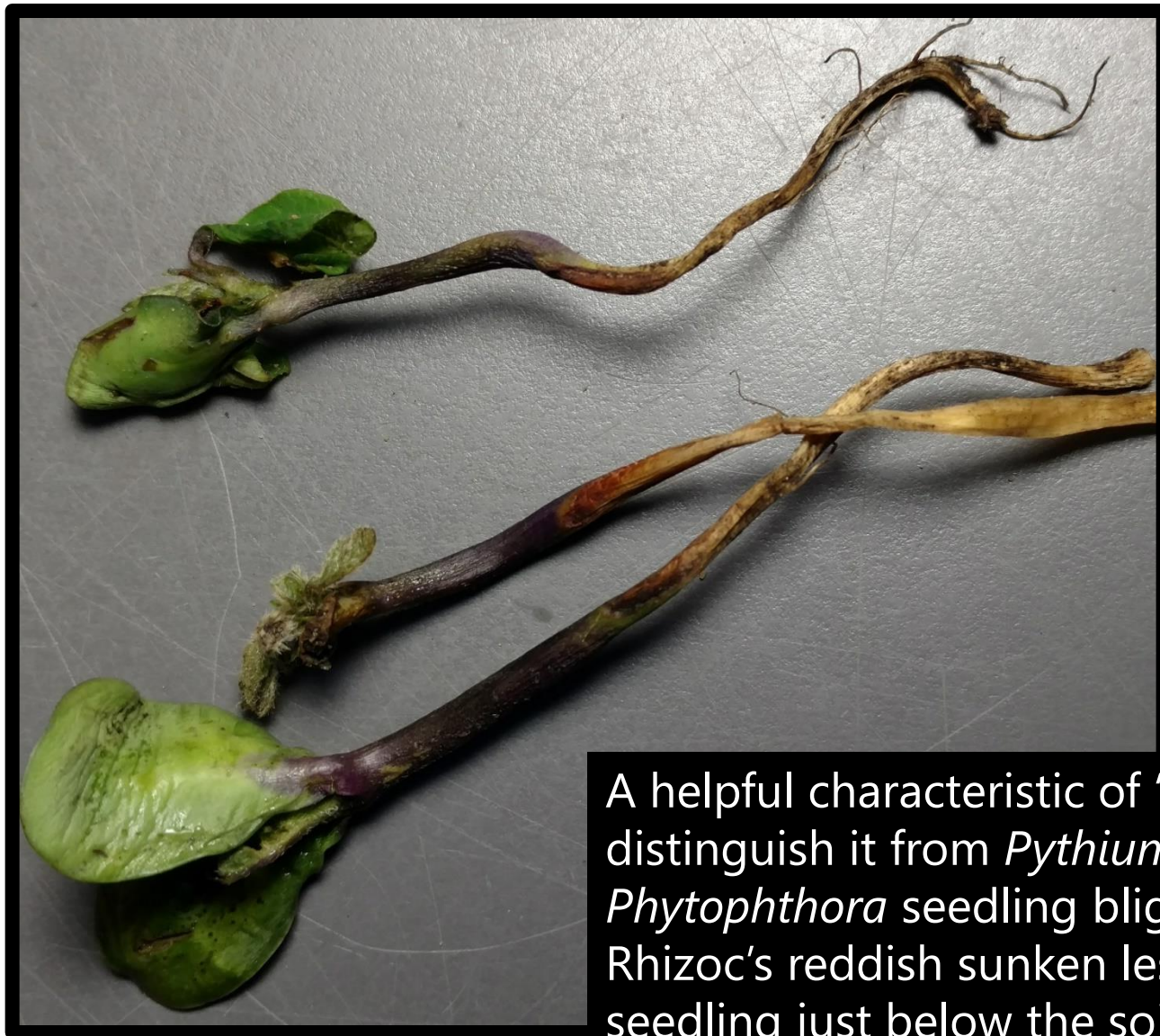


# Nutrient Deficiencies: Corn

- The earliest corn is reaching V4-V5 and nutrient deficiencies should be assessed in anticipation of side-dress applications.
- Corn planted on high sandy areas is beginning to show symptoms of N deficiency.



# *Rhizoctonia* on Soybean



A helpful characteristic of "Rhizoc" to distinguish it from *Pythium* or *Phytophthora* seedling blights is Rhizoc's reddish sunken lesions on seedling just below the soil surface.



# Pre-emergent herbicide injury

Timing between herbicide application and planting was delayed because of weather, causing burning on soybean cotyledons and new growth.



# Carrot Herbicide Timing

Caparol or Veg Pro –  
Can only be applied  
at low rates at the 3  
leaf stage.

This is very  
important to avoid  
injury to the crop!



# Cabbage

Finding diamondback moth larva, which are very small pests that require an up-close look at typically the leaf undersides.



# Panic in the Peas!

- Volunteer potatoes have been awful this spring because of the mild winter. Colorado Potato Beetles are roughly the same size as a pea and cannot be separated at harvest.
- Growers are having to make a special insecticide application to control CPB in the pea fields as harvest looms.

