



On The Radar



June 28th, 2024

Status by Crop

Corn: V4-V8

Soybeans:

Early planted: V4-R1

Late planted: V1-V2

Potato: Budding – Tuber Bulking

Cabbage: Planted – Heading

Carrots:

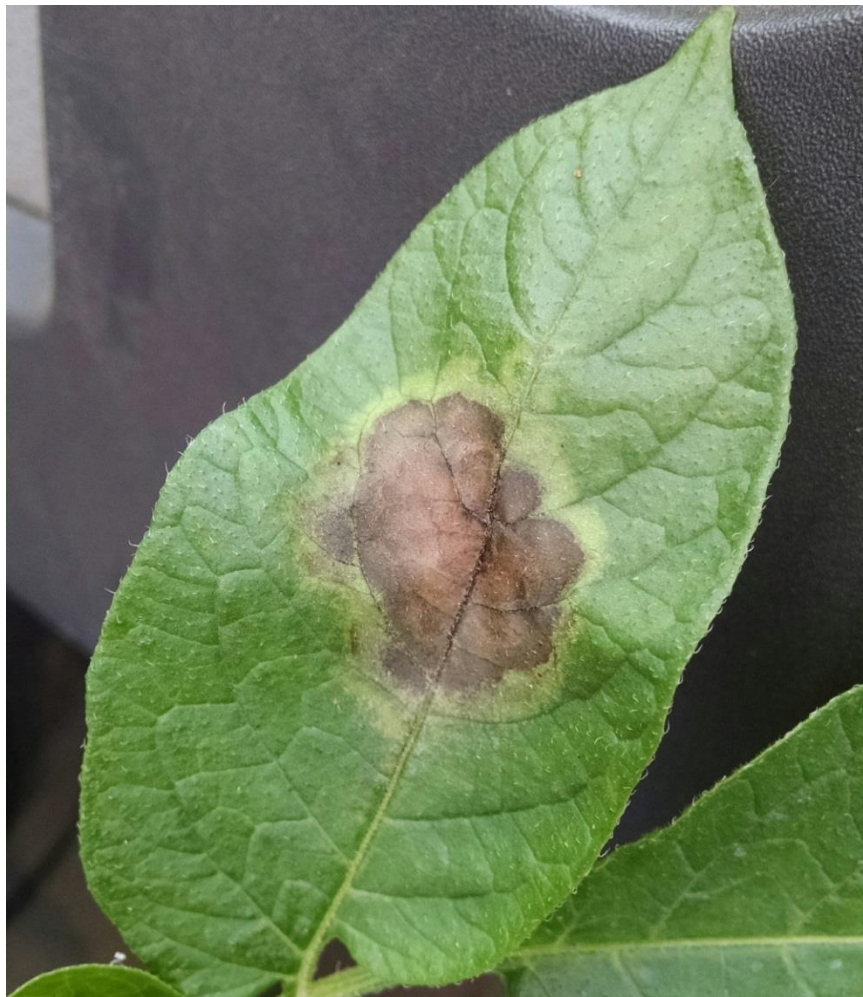
Early planted: 4-6 leaves

Late planted: 2 true leaves

Potatoes-On the watch for Late Blight!

- According to the University of Wisconsin's Disease Severity Value Accumulations Scale, Potatoes planted between April 5th and April 22nd have DSV's over 18 which indicates the threshold for late blight risk and growers should consider rotating preventative fungicides into their program.

Late Blight



Check shaded East borders.

Check around the pivot point.

Check low spots.

Check any borders where there are overhanging branches from the tree line.

These are good places to begin your search but it can pop up anywhere in the field.

Colorado Potato Beetle



Recent wet weather patterns have caused delays in insecticide applications which has led to increased defoliation as CPB larval stages progress

Corn – Rapid Growth Syndrome



- Rapid Growth Syndrome is a scenario where corn leaves do not unfurl properly and the whorl becomes twisted or tightly wrapped. This rapid growth can be due to over fertilization, variable temperatures, and rainfall after dry periods.

Sweet Corn-Beginning Reproductive Stages

Beginning to push Tassels



Ear formation



Soybeans - Bloom

- The earliest planted soybeans have begun blooming on the lowest nodes
- 1st fungicide application should be at 30% bloom with a follow-up application 2 weeks later.



Soybeans - SCN



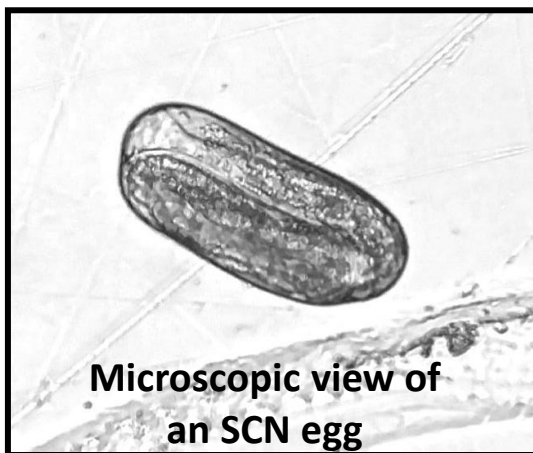
Hitting the timeframe where problem spots for soybean cyst nematode (SCN) pressure become more distinctly visible from the damage their feeding causes. Above is a photo with a few patches of stunted plants, one symptom of high SCN pressure.

Soybean Cyst Nematode (SCN) Testing

Planning out next year's soybean fields & taking an SCN soil sample from those respective fields is a good start to ensuring a successful soybean crop.

Pest Pro's SCN soil test provides SCN egg counts, SCN counts, as well as other plant parasitic nematode counts. From these nematode populations observed, we provide a risk assessment, which will suggest fumigation or nematicide application if necessary.

Contact your local Allied Agronomy Advisor to schedule your 4 FREE soybean cyst nematode samples to be taken!



**Microscopic view of
an SCN egg**



**Roots with an SCN cyst,
which contains many eggs**

Cabbage – Weed Control

- Earliest cabbage are entering the heading stage and the only option left for weed control is hand weeding
- Direct seeded cabbage are cupping and the last cultivation will be done this week

