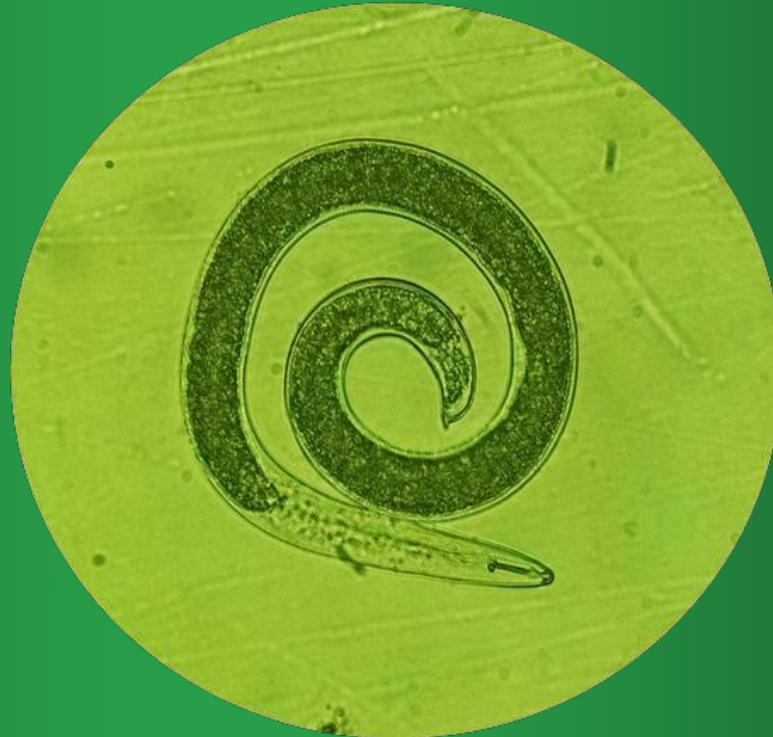


On The Radar



August 9th , 2024

Status by Crop

Corn: R2–R3

Soybeans: R3-R5

Potato: 100% canopy; canopy starting to senescence – harvest on early varieties

Cabbage: cupping – harvest

Carrots: 6 true leaves – 100% canopy

Pheromone Traps

Pheromone Traps

Western Bean Cutworm

- Grand Marsh, WI: 6 western bean cutworm
- Plover, WI :10 Western bean cutworm
- Plainfield, WI : 3 western bean cutworm

Cabbage Crop

- Coloma, WI: : 0 diamond back moth
and 1 cabbage looper
- Plainfield, WI : 0 cabbage looper
1 diamond back moths



Corn

R1 to R3 Reproductive Stages



Silking



Blister



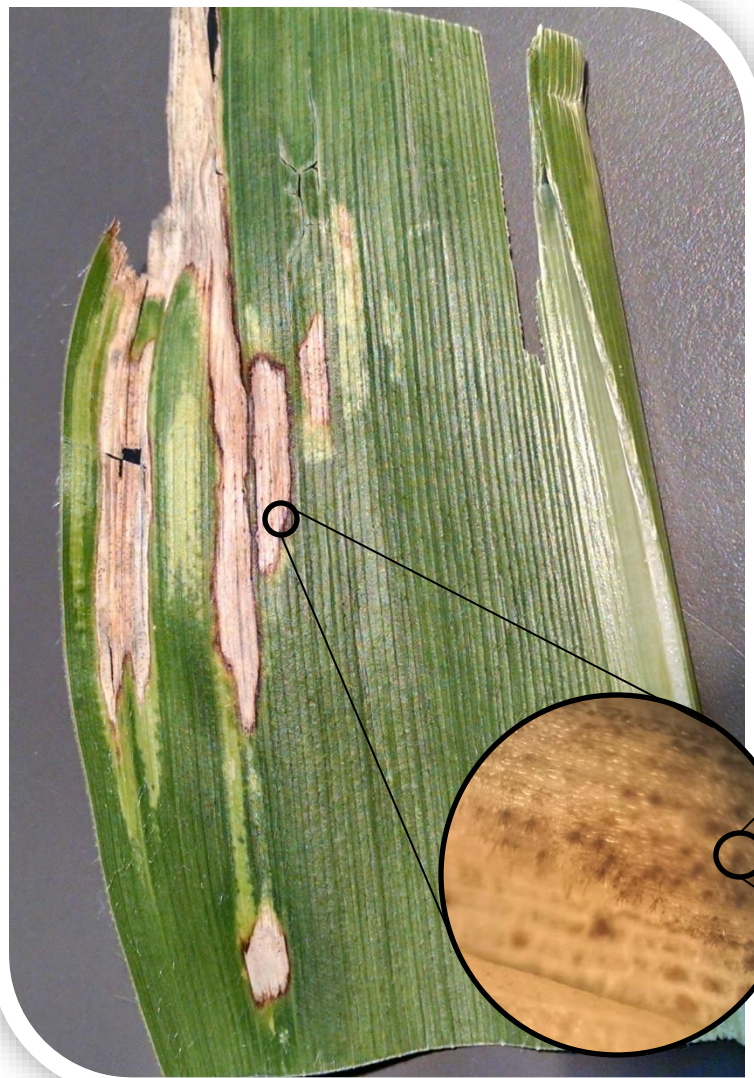
Milk

Gray Leaf Spot on Corn

Symptoms can vary dramatically between resistant and susceptible hybrids.

Pictured here is a susceptible variety.

Red flags go up when this is found on the ear leaf of a susceptible variety.

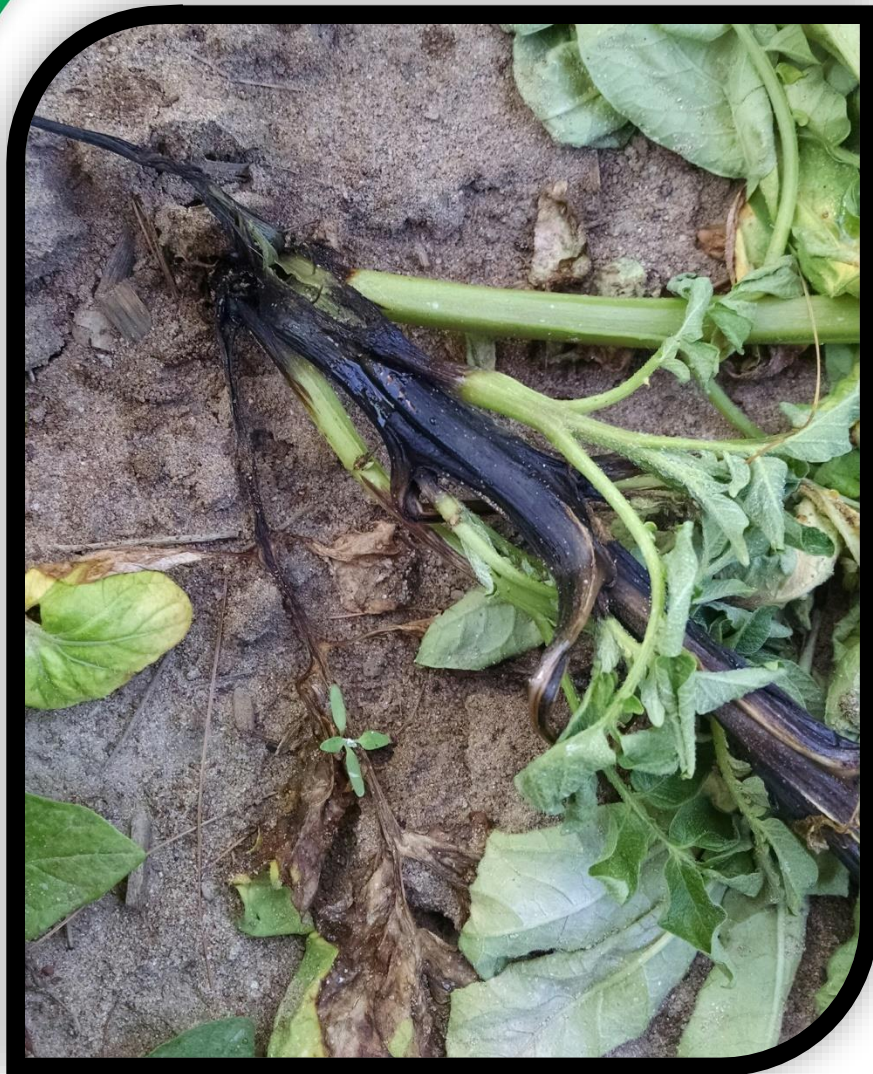


Soybean Downy Mildew

Downy mildew is a disease of the foliage, caused by a fungus-like organism. It is spread from plant to plant by airborne spores. It is a disease of wet weather as infection is favored by prolonged leaf wetness.



Blackleg on Potato



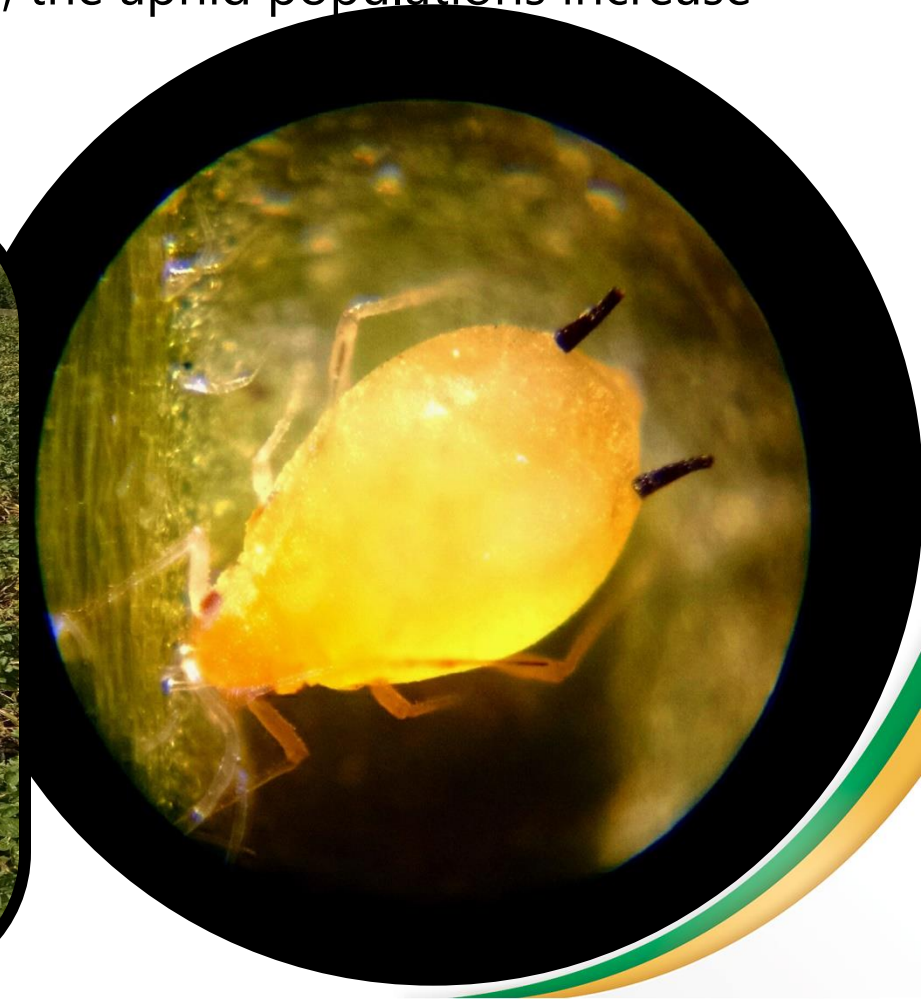
We haven't seen any vines this severely affected yet but we are seeing early symptoms.

As the vines lay down and the canopy opens back up, the incidence and severity will become clearer.

Management options for this disease are very limited because the disease is caused by a bacterium and fungicides do not work against bacteria.

Potato Aphids

We are still observing high populations of aphids in potatoes this week. Aphid blooms can occur when a chemistry like permethrin is applied. The permethrin does not hurt the aphids but it kills the insects that prey on them. In the absence of predators, the aphid populations increase dramatically.



Parasitic Dodder



Dodder is a parasitic plant. Other weeds compete with the crop for nutrients, water, and sunlight whereas dodder just invades the crop plant itself and takes what it needs that way.

Cabbage Harvest

Cabbage harvest is underway. Cabbage is harvested when the head is firm and solid, but before it splits or cracks. Cabbage can be harvested when it reaches anywhere from 4–12 inches in diameter and weigh 1–3 pounds.

