



# On The Radar



July 3<sup>rd</sup>, 2026

# Status by Crop

---

Corn: V5 – V9

---

Soybeans: V4 – R1

---

Potatoes: Early Bloom – Early Tuber Bulking

---

Cabbage: Head Diameter 3"

---

Carrots: 1 True Leaf – 7 True Leaves

---

# Pheromone Traps

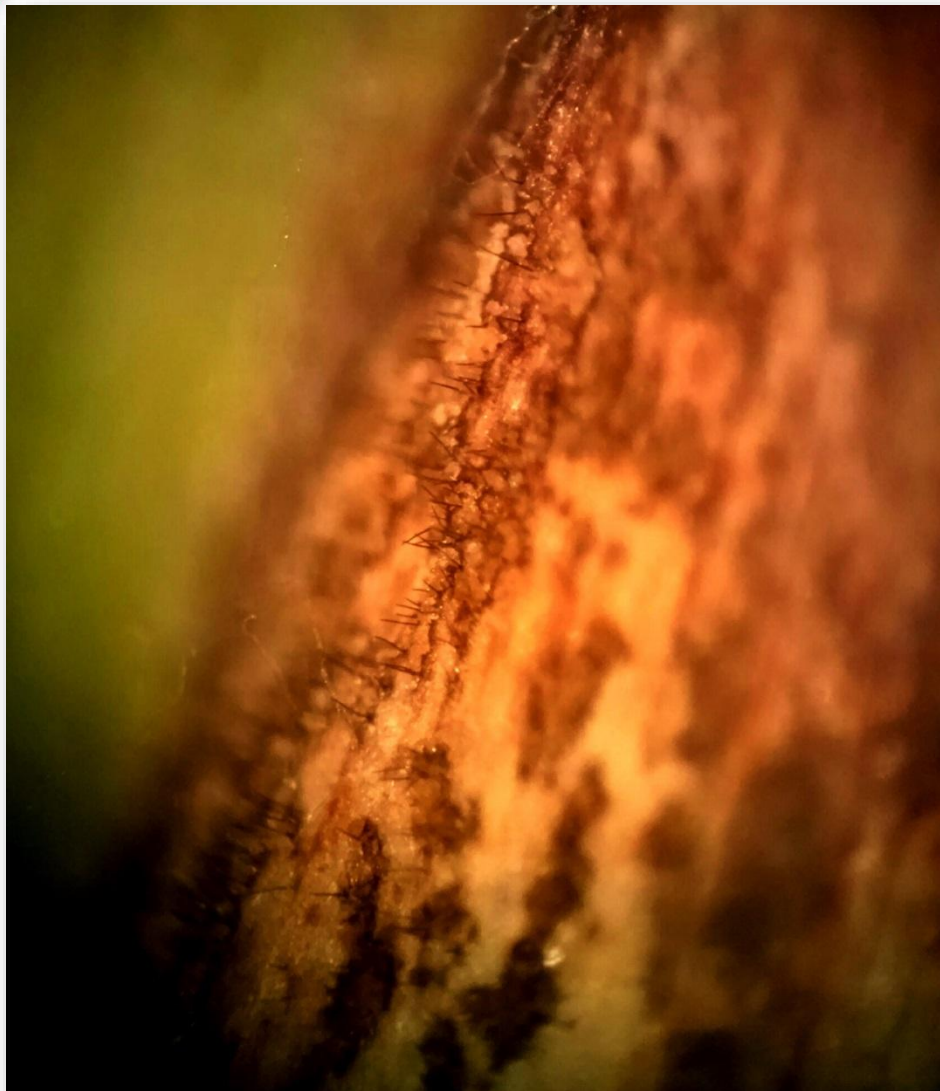
- Grand Marsh
  - 1 Western Bean Cutworm
  - 0 True Armyworm
- Coloma
  - 0 Western Bean Cutworm
  - 2 True Armyworm
- Almond
  - 6 Western Bean Cutworm
  - 2 True Armyworm

# Anthracnose on Corn



We are beginning to see the symptoms of anthracnose in corn in lower canopy

# Disease Diagnosis: Anthracnose Leaf Blight on Corn



After 1.5 days in a humidity chamber (Ziploc bag with moist paper towel), can get fungal structures to develop, which help confirm the causal agent.

The black spikes are called “setae” (see-tee).

They are a diagnostic sign that confirms the presence of an anthracnose-causing *Colletotrichum* spp.

# Beans beans beans

## Wind & Rain Damage



Severe disease outbreaks often occur after a period of humid, rainy weather. Storms with heavy rain and high winds cause plant wounding which enable pathogens to enter and infect plant tissues. Wounds caused by damaging plants with farm machinery or field workers during cultivation can spread pathogens, especially when foliage is wet.



5363005

# Soybeans



Soybeans are starting to reach the R1 stage. This is an ideal time to get a white mold fungicide application out, follow up with another application 2 weeks later.



This timing helps coat the soybean flowers with fungicide, reducing the chances of white mold spread through lower canopy due to flowers falling off.

## Potato Early Dying

We have crews out the last few weeks doing Early Dying sampling. Early Dying is a disease complex between *Verticillium dahlia* and Root Lesion Nematodes.

All Potato Early Die samples taken by the Pest Pros crews are sent to the Pest Pros Lab for processing

Potato Early Dying tests will give you a risk rating that will help determine fumigation rates or if a nematicide is necessary



# Potato

With the hot, humid, wet weather we experienced this week, we could be seeing a lot of vine rot next week.

The best way to help prevent vine rot is by only irrigating as needed



Black Leg is shown on the left  
Bacterial Vine Rot shown on the right



# Carrots

As you view down the carrots, you might notice that the rains we've received have caused a little more bed erosion, especially in the sandy fields. Bed shaping will help push the broadcasted fertilizer closer to the carrot's root system and fix smaller erosion issues.

# Cabbage Loopers

Although seedlings are occasionally damaged, most injury occurs after heading. Loopers chew ragged holes in leaves and bore through and contaminate heads and leaves with their bodies. Young plants between seedling stage and heading can tolerate substantial leaf damage without yield loss.



Cabbage Looper

## Fun Fact

From April to June, the Pest Pros crew travels to Missouri to scout potatoes. All the potatoes we scout are grown for potato chips for the 4<sup>th</sup> of July!





**HAPPY**

*4th of July!*

**INDEPENDENCE DAY**