



Manual & Pattern Flights

Manual Flights

Using a drone to manually fly a field allows for a closer look at the crop and for weeds, diseases and disorders in a field. We also offer panoramic views for the field to give you a true birds eye view of the growing crop.

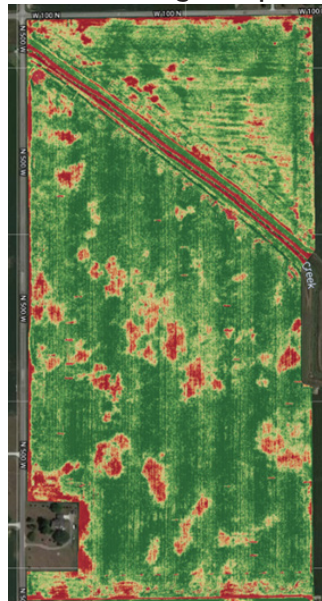
Pattern Flights

Unlike manual flights, pattern drone flights automatically cover an entire field. Using autonomous flight software, our drones can capture 1-inch resolution imagery creating a high-quality map of every acre that can be easily reviewed. Plant Health of the field is represented by stressed areas in red and healthy areas in green. This map can also give a clear idea of how a field will yield once harvested and can be mathematically analyzed.

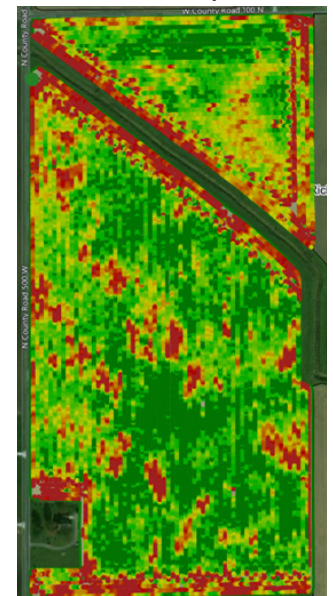
An overview of an entire field provides:

- Creation of Plant Health maps (ex. NDVI)
- Crop health monitoring
- Weed monitoring
- Weather damage assessment
- Replant decisions and development
- Crop stand and development

Patterned Flight Map



Yield Map



Drone Field Scouting Timeline

| May | June | July | Aug |
|---|--|--|-----|
| Stand Counts Evaluate crop population and replant decisions | Crop Health Monitoring Pattern flights monitoring stress areas Manual Flight Scouting Look for weeds, diseases, disorders | Yield correlations Evaluate the potential of a field | |

Stand Counts

Stand count features include a more accurate representation of the field achieved by wide-area comprehensive sampling, which enables sectional replanting to save time and maximize yield. Furthermore, the solution offers insights for assessing the quantity and quality of a planting, such as "Skip" or "Double" rate, which provide valuable data that can quantify planter performance.

For more information, contact your branch manager or Sarah Bolinger, Directive Scouting Specialist at (765) 675-7529.

Stand Counts

