

12/7/2022

Trial: S-105

Hybrid	RM	Yield30% DM		Milk/acre	Milk/ton	NDFD	NDF	STARCH	CP	IVD	TDN
		Tons/acre	Moisture								
B06F91Q	106	36.5	67.4	40000	3659	56.1	36.9	36.6	6.9	79.3	75.7
CP4652SSPRO/RIB	106	36.2	65.7	38468	3542	54.8	37.6	34.8	7.1	79.4	74.3
CP4516TRE/RIB	105	36.0	62.6	36036	3350	53.6	37.1	35.8	6.6	80.2	71.4
P0622Q	106	35.7	67.9	38475	3600	56.0	37.5	34.1	7.1	79.0	75.3
B04R11Q	104	35.6	65.6	38277	3581	55.5	37.4	36.2	7.1	79.2	74.6
CP4791AS3111	107	35.4	66.5	38320	3610	55.4	37.2	36.6	6.9	79.4	74.9
DKC57-71RIB	107	35.3	65.2	36747	3479	55.5	38.6	33.9	7.1	78.6	73.6
CP4757VT2P/RIB	107	34.9	65.8	37473	3586	55.3	37.7	35.2	7.2	79.2	74.7
NK0440-AT	104	34.9	65.7	37073	3535	54.7	37.4	35.8	7.0	79.6	74.1
B09T79SX	109	34.9	68.9	36649	3500	55.9	40.8	31.3	6.9	77.2	74.0
P0404Q	104	34.8	65.3	37589	3602	55.3	36.4	37.5	6.9	79.9	74.7
B06Y18Q	106	34.7	66.5	36932	3549	55.8	37.5	34.4	7.1	79.1	74.6
DKC53-94RIB	103	34.2	65.8	36119	3518	55.1	37.1	35.4	6.9	79.6	73.9
P0306Q	103	34.0	65.6	36099	3536	55.3	38.4	35.3	7.0	78.8	74.1
NK0696-D	106	33.6	67.4	35321	3508	55.7	39.6	31.4	7.3	77.9	74.3
CP4444VT2P/RIB	104	33.5	63.2	34968	3475	54.6	36.5	37.1	6.7	80.1	73.0
CP4676SS/RIB	106	33.4	68.2	36452	3647	56.3	38.2	34.8	7.0	78.5	75.8
P0339Q	103	33.4	65.5	35583	3550	54.6	37.6	36.4	7.0	79.5	74.2
NK0877-V	108	32.7	66.7	34992	3572	55.2	39.1	33.9	7.0	78.4	74.7
DKC54-38RIB	104	32.4	65.2	33843	3484	54.8	38.5	34.7	7.1	78.9	73.5
DKC55-37RIB	105	31.4	65.7	32766	3489	54.2	38.5	34.3	6.8	79.2	73.5
NK0748-AA	107	31.4	66.5	33362	3540	55.9	38.6	33.7	7.1	78.4	74.4
Mn		34.2	66.1	36418	3548	55.3	38.0	35.0	7.0	79.0	74.3
LSD(.10)		1.0	0.8	1395	79	0.6	1.6	1.8	0.2	0.9	1.0
#Locs		5	5	5	5	5	5	5	5	5	5
CVErr		3.092	1.383	3.344	1.908	1.048	2.901	3.664	2.345	0.889	1.167



Learn more about our brands at  
[winfieldunited.com](http://winfieldunited.com)

Results are generated from field observations and may change as additional data is gathered. Crop results are dependent on the impact of many factors beyond the control of WinField United including without limitation, reduced performance due to weather, soil variations and may even reflect differences in agronomic practices.

© 2022 WinField United. Answer Plot<sup>®</sup>, CROPLAN<sup>®</sup> and WinField<sup>®</sup> are trademarks of WinField United.

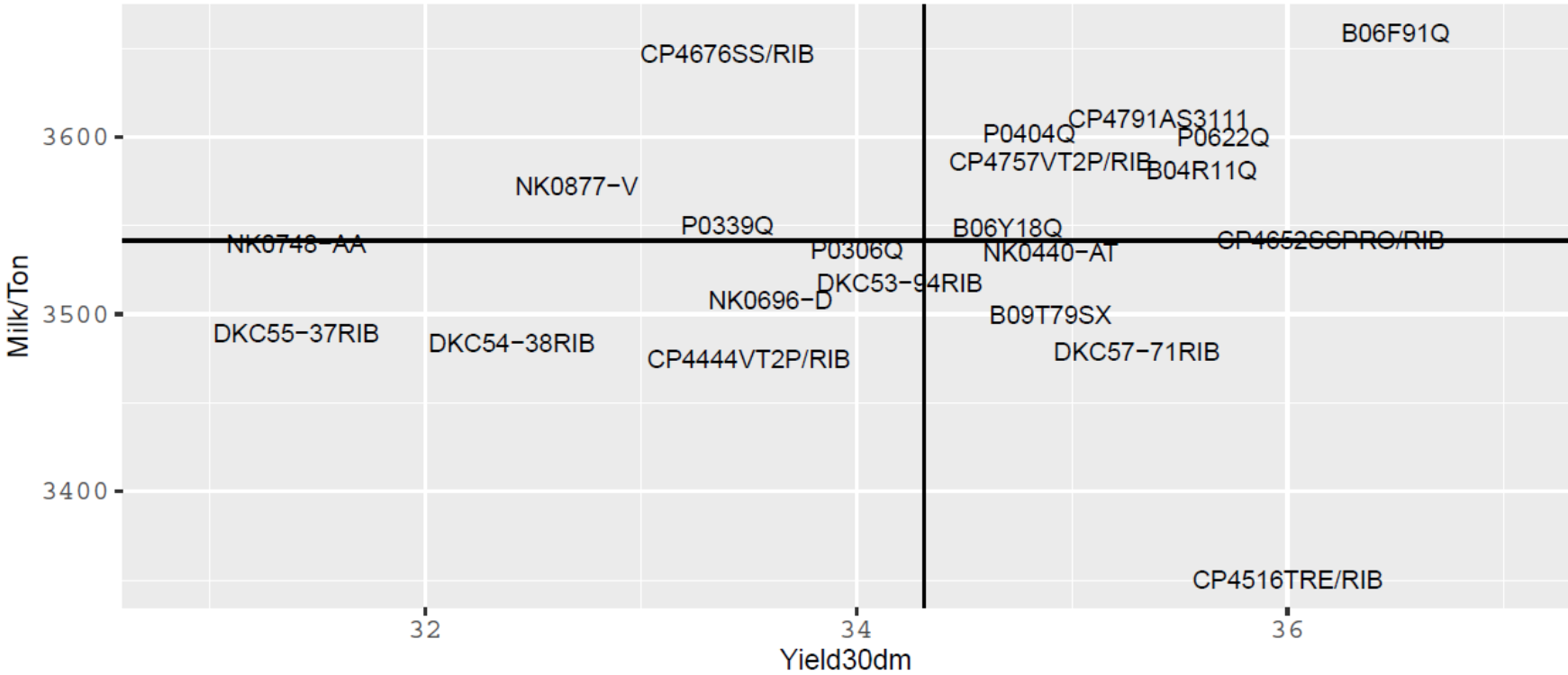
Filters

Filter

Berlin-WI, Chilton-WI, Menomonie-WI, Wanamingo-MN, WestSalem-WI



### Relationship Between Yield and Milk/Ton in the S-105 Trial Region: Western Great Lakes



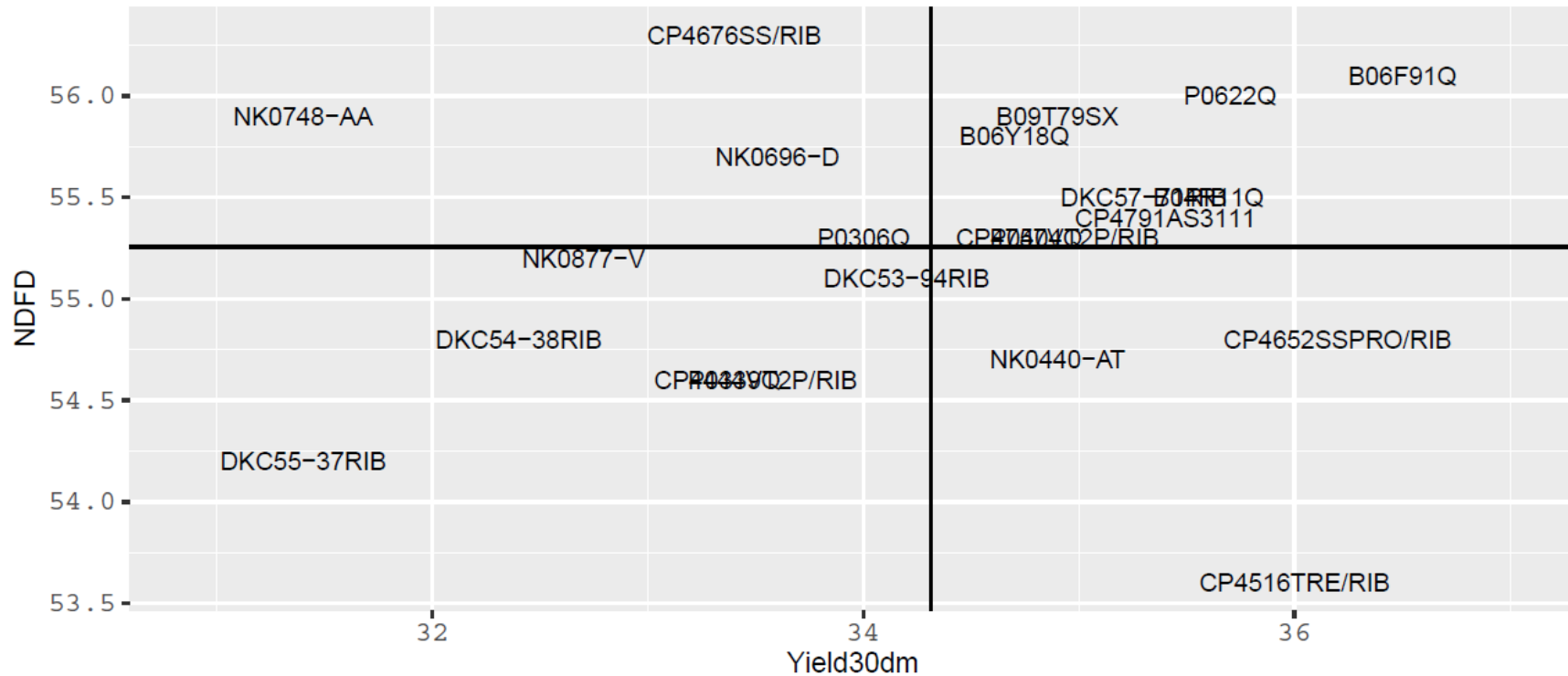
Learn more about our brands at [winfieldunited.com](http://winfieldunited.com)

Results are generated from field observations and may change as additional data is gathered. Crop results are dependent on the impact of many factors beyond the control of WinField United including without limitation, reduced performance due to weather, soil variations and may even reflect differences in agronomic practices.

© 2022 WinField United. Answer Plot®, CROPLAN® and WinField® are trademarks of WinField United.



## Relationship Between Yield and NDFD in the S-105 Trial Region: Western Great Lakes



Learn more about our brands at [winfieldunited.com](http://winfieldunited.com)

Results are generated from field observations and may change as additional data is gathered. Crop results are dependent on the impact of many factors beyond the control of WinField United including without limitation, reduced performance due to weather, soil variations and may even reflect differences in agronomic practices.

© 2022 WinField United. Answer Plot®, CROPLAN® and WinField® are trademarks of WinField United.