

5 WAYS TO INCREASE YIELD AND EFFICIENCY TODAY



Wesley Hedges
Precision Ag Manager

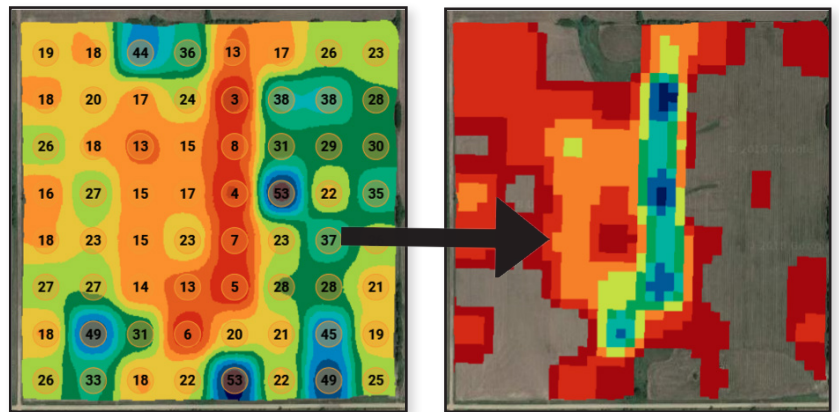
Did you know that in 2015, \$4.6 billion was invested into agtech? I think it's safe to say agtech/precision ag is here to stay and the farmers adopting agtech lead the way in continuing to increase yields and efficiencies on their farms. Part of my role at Farmers Cooperative is to find the best agtech we can provide to you that ultimately helps increase your profit margins.

Here are our top 5 Expanded Agronomy Products and Services we recommend you take advantage of this growing season.

1. Have any of your field yields plateaued?

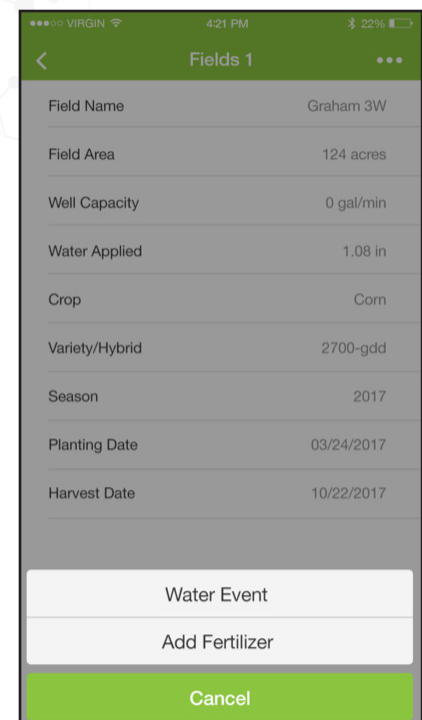
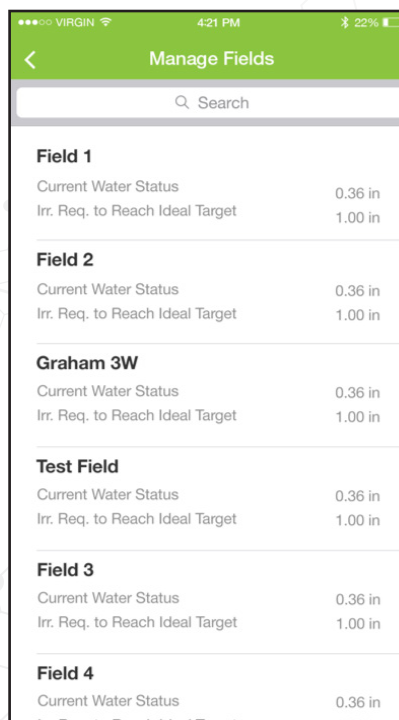
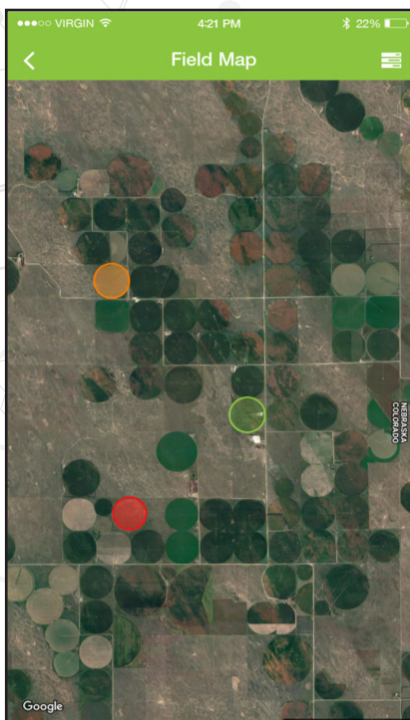
Optimum nutrient levels are necessary to achieve a field's maximum yield potential.

The best way to determine nutrient variability throughout the field is by grid soil sampling. Once nutrient levels are determined, we then correct the nutrient levels by independently variable rating the fertilizer (up to 3 products) in a single application.



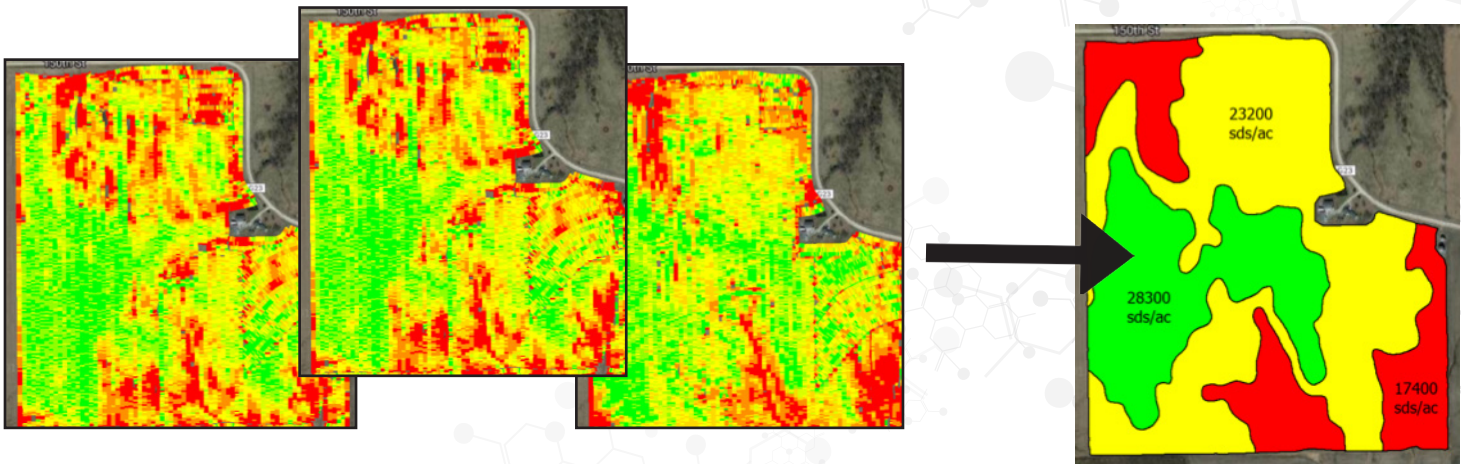
2. How to monitor soil moisture without high dollar in-field sensors?

Soil moisture sensors can become a costly investment. We offer a simple, low cost solution that tracks soil moisture levels based on hyperlocal weather, field characteristics and a cloud-based application.



3. Uniform Rate vs. Variable Rate

Variable rate can lower input costs and increase overall yield, compared to uniform rate. Simply putting the right rate of product where it needs to go increases overall efficiency. Our variable rate seed, nitrogen, and/or fertilizer blend Rx's are created by our agronomists and then approved by you to ensure you have the best Rx for the job.



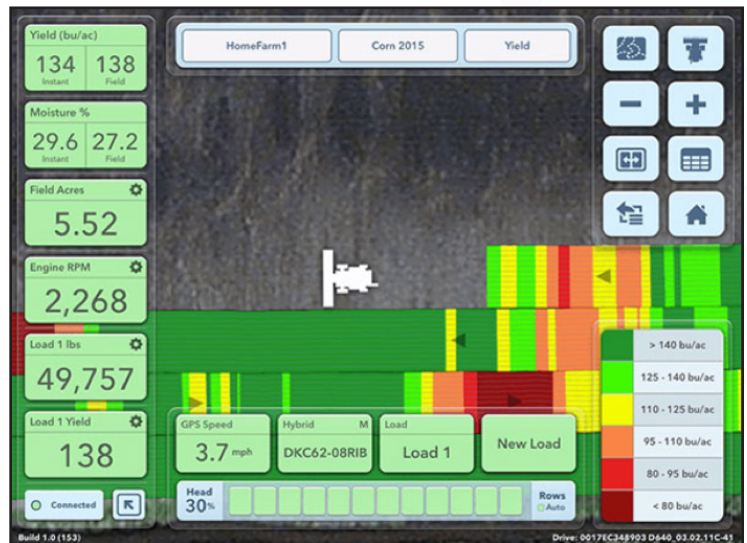
4. Nitrogen Mineralization Depends on the Year

Nitrogen mineralization is different every year, which is primarily dependent on weather conditions. For this reason, we offer the R7 Field Forecasting Tool, which helps you track nitrogen levels in season. This program includes a tool for nitrogen modeling, tissue sampling, and rate/timing recommendations.

	07/06	07/08	07/10	07/12	07/14	07/16	07/18	07/20	07/22
20 Inset	+27 lbs/ac +18 lbs/ac	+25 lbs/ac +13 lbs/ac	+24 lbs/ac +12 lbs/ac	+22 lbs/ac +12 lbs/ac	+22 lbs/ac +12 lbs/ac	+20 lbs/ac +9 lbs/ac	+11 lbs/ac +9 lbs/ac	-2 lbs/ac +6 lbs/ac	-17 lbs/ac +1 lbs/ac
30 Inset	+42 lbs/ac +19 lbs/ac	+40 lbs/ac +19 lbs/ac	+37 lbs/ac +18 lbs/ac	+33 lbs/ac +16 lbs/ac	+29 lbs/ac +16 lbs/ac	+23 lbs/ac +14 lbs/ac	+12 lbs/ac +11 lbs/ac	-5 lbs/ac +6 lbs/ac	-20 lbs/ac +1 lbs/ac
40 Inset	+54 lbs/ac +24 lbs/ac	+51 lbs/ac +23 lbs/ac	+45 lbs/ac +21 lbs/ac	+37 lbs/ac +19 lbs/ac	+32 lbs/ac +18 lbs/ac	+21 lbs/ac +15 lbs/ac	+9 lbs/ac +11 lbs/ac	-10 lbs/ac +6 lbs/ac	-24 lbs/ac +2 lbs/ac
50 Inset	+67 lbs/ac +29 lbs/ac	+66 lbs/ac +29 lbs/ac	+53 lbs/ac +25 lbs/ac	+39 lbs/ac +21 lbs/ac	+33 lbs/ac +19 lbs/ac	+19 lbs/ac +15 lbs/ac	+4 lbs/ac +11 lbs/ac	-15 lbs/ac +6 lbs/ac	-29 lbs/ac +2 lbs/ac
60 Inset	+81 lbs/ac +35 lbs/ac	+74 lbs/ac +32 lbs/ac	+58 lbs/ac +28 lbs/ac	+43 lbs/ac +24 lbs/ac	+32 lbs/ac +21 lbs/ac	+16 lbs/ac +16 lbs/ac	-1 lbs/ac +11 lbs/ac	-20 lbs/ac +6 lbs/ac	-34 lbs/ac +2 lbs/ac
70 Inset	+88 lbs/ac +38 lbs/ac	+69 lbs/ac +32 lbs/ac	+53 lbs/ac +28 lbs/ac	+39 lbs/ac +24 lbs/ac	+29 lbs/ac +21 lbs/ac	+11 lbs/ac +16 lbs/ac	-6 lbs/ac +11 lbs/ac	-25 lbs/ac +6 lbs/ac	-39 lbs/ac +2 lbs/ac
80 Inset	+83 lbs/ac +38 lbs/ac	+64 lbs/ac +32 lbs/ac	+48 lbs/ac +28 lbs/ac	+34 lbs/ac +24 lbs/ac	+24 lbs/ac +21 lbs/ac	+6 lbs/ac +16 lbs/ac	-11 lbs/ac +11 lbs/ac	-30 lbs/ac +6 lbs/ac	-44 lbs/ac +2 lbs/ac
90 Inset	+78 lbs/ac +38 lbs/ac	+59 lbs/ac +32 lbs/ac	+43 lbs/ac +28 lbs/ac	+29 lbs/ac +24 lbs/ac	+19 lbs/ac +21 lbs/ac	+1 lbs/ac +16 lbs/ac	-16 lbs/ac +11 lbs/ac	-35 lbs/ac +6 lbs/ac	-49 lbs/ac +2 lbs/ac
100 Inset	+73 lbs/ac +38 lbs/ac	+54 lbs/ac +32 lbs/ac	+38 lbs/ac +28 lbs/ac	+24 lbs/ac +24 lbs/ac	+14 lbs/ac +21 lbs/ac	-4 lbs/ac +16 lbs/ac	-21 lbs/ac +11 lbs/ac	-40 lbs/ac +6 lbs/ac	-54 lbs/ac +2 lbs/ac
110 Inset	+68 lbs/ac +38 lbs/ac	+49 lbs/ac +32 lbs/ac	+33 lbs/ac +28 lbs/ac	+19 lbs/ac +24 lbs/ac	+9 lbs/ac +21 lbs/ac	-9 lbs/ac +16 lbs/ac	-25 lbs/ac +11 lbs/ac	-45 lbs/ac +6 lbs/ac	-59 lbs/ac +2 lbs/ac

5. Climate FieldView Plus

Map your data on an iPad during planting and harvest. Then view the data on your computer, iPad, and iPhone anytime.



Contact your local representative or Wesley Hedges at 402-239-3749 to learn more.

Tri-County Students Tour Jansen Dry Fertilizer Facility on February 27

