

CORN SEED

DKC70-27RIB

Brand Blend

DKC70-27RIB Brand Blend is a 120 RM corn that offers exciting yield potential in both irrigated and dryland environments. This product also offers strong foliar disease tolerance, good grain quality, good standability and the ability to perform at a range of planting populations.

Selected Trait: **VT Double PRO® RIB Complete® corn blend**



VT2PRIB



Disease Shield



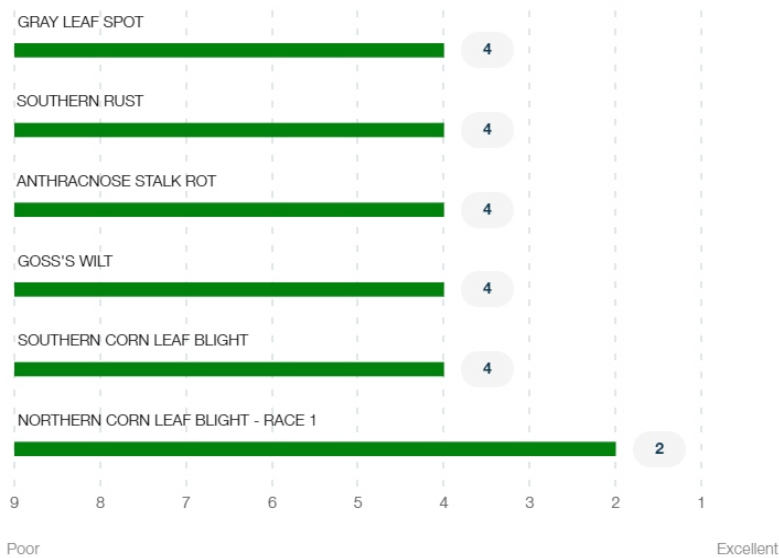
Maturity **120**

Strengths

- Excellent foliar disease tolerance
- Excellent late season appearance and standability
- Has shown good test weight, grain quality, and husk coverage
- Adapted to most soil types and crop rotations
- Has shown decent ear flex
- Robust plant type that can provide a wide canopy and dual purpose potential

Product Details

Disease Ratings (Gray Leaf Spot + 5 More)



Growth (Seedling Growth + 7 More)

4

4

3

Seedling Growth	Emergence	Root Strength
3	3	3
Stalk Strength	Drought Tolerance	Greensnap Tolerance
Tall	Med High	
Plant Height	Ear Placement	

Management (Gdus To Mid-Pollination + 7 More) ^

GDUS TO MID-POLLINATION	1420
GDUS TO BLACK LAYER	3000
VALUE ADDED TRAIT	VT2PRIB
RELATIVE MATURITY	120
PLANTING RATE	Medium
NEW PRODUCT	NO
DEKALB® DISEASE SHIELD®	YES
VARIETY	01065462

Harvest (Staygreen + 3 More) ^

2

Staygreen
Excellent

1

Harvest Appearance
Excellent

4

Drydown

2

Test Weight
Excellent

Herbicide (Growth Regulators Sensitivity + 2 More) ^

A

Growth Regulators
Sensitivity

A

Isoxazoles
Sensitivity -
Preemergence

A

Sulfonylureas
Sensitivity

Plant Description (Cob Color + 2 More) ^

Red

Cob Color

Yellow

Kernel Cap Color

16

Kernel Row

Product Details Key: ^

For RIB products, all product details listed above are for the major component of the blended product.

Local Rating Scale

- ★ Highly Recommended
- 🛡️ Recommended with Management
- 🚩 Use with Management
- 🚫 Not Recommended
- 🏠 New Product

National Rating Scale

1 = Excellent, 9 = Poor, NR = Not Recommended, - = data is insufficient at this time.

Herbicide Sensitivity

A = Acceptable, C = Caution, W = Warning. Environmental conditions may cause herbicide interactions different than indicated for a particular growing season.

Herbicide Tolerance

Ratings are based on observations and research using herbicides at labeled and above labeled rates to simulate extreme environmental conditions, misapplication and adverse soil pH or organic content.

GDU (Growing Degree Unit)

Ratings are based on observations and research using herbicides at labeled and above labeled rates to simulate extreme environmental conditions, misapplication and adverse soil pH or organic content.