



Don't Gamble on Your Herbicide Program

Weed competition can be one of the costliest threats to your crop's performance. Your Heritage Agronomy team can help maximize your crop's positive response to weed control in terms of yield, ease of harvest, and improved grain quality.

Corn:

Whether utilizing a full residual one-pass program such as [Resicore XL](#) or a set up two-pass program with [Harness Xtra 5.6L](#) or [SureStart II](#), cut out any weed competition stealing valuable nutrients, water and sunlight from your cash crop.

Soybeans:

The need for strong foundational residuals such as [Presidual](#), [Sonic](#) or [Trivence](#) is high even in a later planted season. In company with a strong burndown program or clean tilled field, these products provide up to 6 weeks of control before second pass applications need to be applied. Remember, these are pre-emerge products and must be applied up to 3 days after planting and/or before the beans begin to crack.

The Adjuvant Trifecta:

Heritage agronomists also recommend the proper adjuvant package depending on the trait platform you are utilizing on your farm. The proper combination of adjuvants can dramatically increase efficacy and maximize your investment. The fundamental adjuvant package Heritage commonly recommends includes:

Class Act® NG

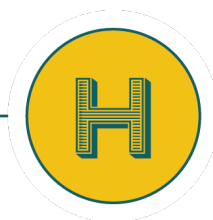
[Class Act® NG®](#) is designed to promote fast, aggressive weed control by improving movement and leaf absorption

InterLock®

[Superb HC®](#) is a high surfactant crop oil concentrate that also helps with herbicide uptake for better performance

Superb® HC

[Interlock®](#) is a deposition aid and drift control agent that improves spray pattern and reduces drift



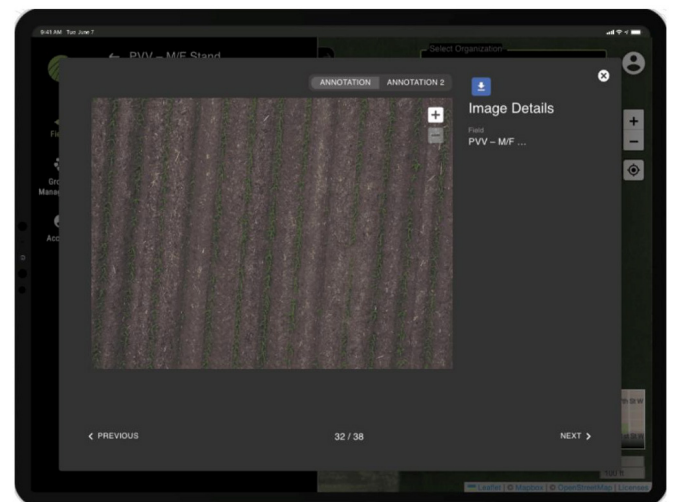
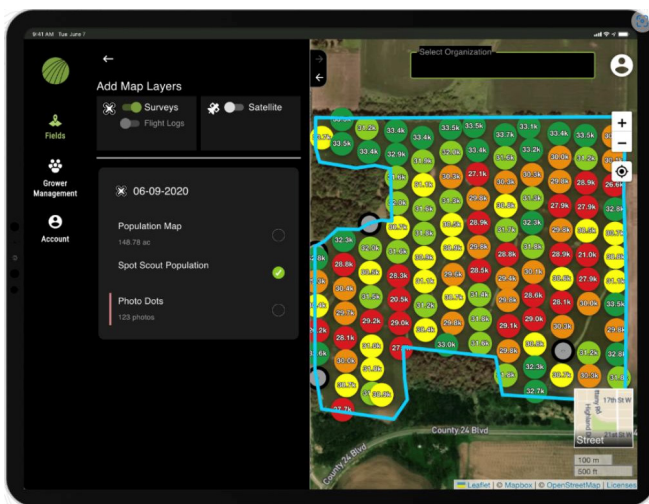
Crop Advantage & Drone Scouting

Many of us have experienced the following situation mid-spring:

- We planted at what we thought was a good time because soil temps were above 60 F and the short-/medium-range forecast looked good.
- Then a cold front arrived, and cold/rainy conditions settled in for a few days.
- Once the crop got up, the inevitable question was – is the stand impacted enough to replant?
- That led to field activities with hula hoops or 17.5-foot sticks to get estimates of stand.

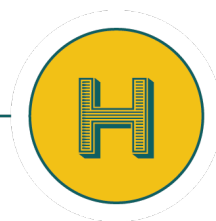
Does this scenario sound familiar?

Today, using drone scouting platforms and the powerful cameras they carry, we can capture high-resolution information (around an acre) and help you evaluate stand counts in a fraction of the time, quickly and reliably.



Heritage Cooperative now offers this service to our customers to better serve your operation. We also offer drone scouting flights to monitor plant health and weed breakthroughs.

Ask your [Heritage Agronomy](#) team about this service.



Terminating Cover Crops

If you have cover crops on the ground, it is imperative to terminate them on-time to ensure success of your cash crop. There are several different methods for terminating cover crops depending on your experience, equipment, and goals. Tillage, herbicides and roller crimping are all great options, click below to learn more.

[Read More >](#)