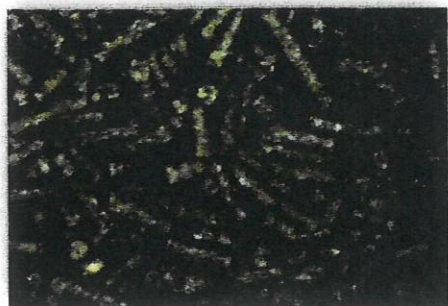




HERITAGE
Cooperative

16% Rabbit Pellet



For grower, breeder & show rabbits.

Contains 16% protein

Important for muscle development.

High in fiber

Essential for proper digestion and gut health.

Manufactured with high quality alfalfa

Ensuring high quality, consistent color, and aroma in every bag.

Firm, durable pellets

Helps minimize waste, enhance feed intake.

Nutritionally balanced and fortified with vitamins and minerals.

Helps promote soundness and development. 11 vitamins and 10 minerals help insure top conditioned rabbits that utilize feed efficiently.

Fantastic value!

Makes 16% Rabbit an excellent choice.

FORM

Pellet

BAG SIZE

50#

Manufactured by: Hanby Farms, Inc. 10790 Newark Road, Newark, Ohio 43830
www.performancefeed.com



16% Rabbit Pellets

For grower & breeder rabbits.

GUARANTEED ANALYSIS

CRUDE PROTEIN.....(MIN).....	16.00 %
CRUDE FAT.....(MIN).....	2.00 %
CRUDE FIBER.....(MIN) 17.0 % (MAX) 21.00 %	
CALCIUM.....(MIN) 1.10 % (MAX) 1.60 %	
PHOSPHORUS.....(MIN).....	0.70 %
SALT.....(MIN) 0.20 % (MAX) 0.70 %	
VITAMIN A.....NOT LESS THAN.....	2,800 IU/LB

INGREDIENTS

GRAIN PRODUCTS, PLANT PROTEIN PRODUCT, PROCESSED GRAIN BY-PRODUCT, FORAGE PRODUCT, ROUGHAGE PRODUCT, ANIMAL FAT PRESERVED WITH BHA, VITAMIN A SUPPLEMENT, VITAMIN D₃ SUPPLEMENT, VITAMIN E SUPPLEMENT, VITAMIN B₁₂ SUPPLEMENT, MENADIONE SODIUM BISULFITE, RIBOFLAVIN SUPPLEMENT, CALCIUM PANTOTHENATE, NIACIN SUPPLEMENT, FOLIC ACID, CHOLINE CHLORIDE, BIOTIN, L-LYSINE, CALCIUM CARBONATE, DICALCIUM PHOSPHATE, SALT, COPPER SULFATE, COPPER OXIDE, IRON CARBONATE, IRON SULFATE, MANGANOUS OXIDE, ETHYLENEDIAMINE DIHYDRIODIDE, COBALT CARBONATE, ZINC OXIDE, SODIUM SELENITE, ETHOXYQUIN (PRESERVATIVE).

FEEDING DIRECTIONS: LIMIT FEED DURING MAINTENANCE AND GESTATION TO 5-6 OZ. PER DAY FOR A 10 LB RABBIT. SELF-FEED DURING LACTATION AND GROWTH. ALWAYS PROVIDE PLENTY OF FRESH, CLEAN WATER.

REMINDER: FEED IS PERISHABLE. STORE THIS PRODUCT IN A COOL, DRY AREA AWAY FROM RODENTS AND INSECTS.

WARNING: DO NOT OFFER ANY FEED THAT IS SPOILED, MOLDY, RODENT OR INSECT-INFESTED, OR ABNORMAL IN APPEARANCE OR ODOR, AS IT MAY CAUSE ILLNESS OR DEATH.