



ALWAYS YOUR ESSENTIAL BUSINESS PARTNER

Welcome to Our New CEO, Brent Deppe!

By Sara Clausen, Director of Communications, Sara.Clausen@keycoop.com

WHEN ONE DOOR CLOSSES, ANOTHER OPENS. That's a common phrase, but without a doubt it's an accurate one. This spring, Key Cooperative is seeing one door close as CEO Boyd Brodie retires and another open as we welcome new CEO Brent Deppe.

This past fall, Boyd shared he intended to retire in the spring. For the first time since 2016, Key's Board of Directors was tasked with its most important responsibility: hiring the CEO. The formal search began in August, when Hedlin Ag Enterprises out of Ankeny was selected as our search firm. Long-time industry partner, Kevin Hinders of Land O'Lakes, was also asked to assist in the facilitation process.

Winter months might be slow for field activity, but the growers serving on your board were extremely busy thanks to the search. Over several months, they narrowed the 80 applicants for the CEO position down to 5 for interviews. Final interviews were held during the last week of February, after which the board unanimously chose to offer the CEO position to Brent Deppe.

CEO is simply a new Key Cooperative title for Brent. His 20-year track record as a member of the Key family has allowed him to serve in a wide range of roles, including

Pictured above: Brent Deppe (right) has been part of the Key Cooperative team for 20 years. He was recently selected as the new CEO, following the retirement of Boyd Brodie. The CEO search was led by the Key Board of Directors, including President Bryce Arkema (left).



Scan to view a message from Board President Bryce Arkema and new CEO Brent Deppe

continued on page 3

GRAIN FEATURE

The One Big Beautiful Act (OBBBA) was signed on July 4, 2025—and it came with several benefits for crop insurance! Producers are now reaping the advantages.

See page 2 for the full story.

ENERGY FEATURE

Last summer, Key Cooperative was presented with the opportunity to purchase a fuel station in Zearing. Key thought adding a modernized 24-hour fuel station would greatly benefit the community and local producers.

See page 4 for the full story.

Sign up to receive Key's e-newsletter every other month. Just scan the QR code and enter your email address!





How Is the Big Beautiful Bill Affecting Crop Insurance Decisions and Upcoming Government Payments?

By Linda Kuhl, Grain Marketing & Origination Specialist, Linda.Kuhl@keycoop.com

THE ONE BIG BEAUTIFUL ACT

(OBBBA) was signed on July 4, 2025—and it came with several benefits for crop insurance!

For this year, the crop insurance decision deadline has passed (the deadline was March 16). Nevertheless, I'd like to provide an update on those changes, because producers are now reaping the advantages.

Before the 2026 crop year, Beginning Farmer and Rancher (BFR) benefits allowed new farmers to receive an additional 10 points of subsidy for their first 5 years. The OBBBA increased those benefits from 5 to 10 years. The rates are now:

- 0–2 years, 15 extra subsidy points
- 3 years, 13 extra subsidy points
- 4 years, 11 extra subsidy points
- 5–10 years, 10 extra subsidy points

For farmers, the changes to the Supplemental Coverage Option (SCO) and the Enhanced Coverage Option (ECO) are the most talked about story.

- SCO – This level covers 86 percent down to the level of the MPCI you purchase.
- ECO – This level covers 95 percent to 86 percent.

Both options offer producers a larger percentage of coverage, using an expected county yield. You continue to have your coverage at the farm level based on the percentage you chose. ECO is not a new option for producers; the change is that subsidy level. It was 44 percent in 2024 and prior years. In 2025, the subsidy was 65 percent. With the OBBBA, it has increased to 80 percent.

For example, ECO on corn would have cost almost \$30 an acre in 2024. It now costs producers approximately \$10 an acre—a very economical way to cover a higher percentage of price and a higher percentage of yields using the county level yields.

SCO has been around for some time. However, it has not received a lot of interest because producers who wanted SCO had to choose Price Loss Coverage (PLC) at the FSA level, and this program has been less advantageous than Agriculture Risk Coverage (ARC). The OBBBA now states that producers can choose ARC or PLC and *still* purchase SCO. Due to this change, the ARC or PLC decision at the FSA office has been delayed from March 15 to sometime this fall.

Finally, one impressive improvement to crop insurance from the OBBBA was the

increased subsidies across all multi-peril crop insurance (MPCI) levels. Three to five points of increased subsidy levels were recognized across most MPCI levels, all equating to more coverage for less cost.

GUIDE TO 2026 PAYMENTS

February 2026 – Bridge payments to be issued based on 2025 planted acres. Must apply at the FSA office.

- Corn: \$44.36/acre
- Soybeans: \$30.88/acre
- Oats: \$81.75/acre

June 2026 – ECO payment to be issued for the 2025 crop.

- If producers purchased ECO in 2025 through their crop insurance agent, this payment will automatically be issued for qualifying counties.

Summer 2026 – Producers will be able to review base acres at FSA offices.

- No details are available yet.

October 2026 – ARC payment to be issued for the 2025 crop.

- This payment will automatically be issued by FSA offices this fall. ●



Welcome to Our New CEO, Brent Deppe!

continued from page 1

Sales Agronomist, Newton Location Manager and Agronomy Division Manager, while also becoming the Chief Operating Officer (COO).

“Key is all I’ve ever known,” said Brent. “I understand our facilities, our operations and our employees. Additionally, since I farm myself, I know how to relate to our members based on their current challenges.”

Brent’s story is deeply rooted in agriculture. He grew up on a small family farm outside of Grinnell, where both his mother and father’s side continue to farm today. Brent is the quintessential small-town kid. He participated in all the high school sports, showed livestock through 4-H and actively helped on the farm. While in college at Iowa State University, Brent spent several summers as a crop scout before working one final summer for Agrilience (now known as WinField® United), joining in their Answer Plot program.

Brent’s wife, Farrah, is a teacher in the Grinnell-Newburg Community School District. They reside just down the road from where Brent grew up. Brent spends every day at Key, and with three active



Brent grew up on a small farm outside of Grinnell, which his mother and father’s side of the family continue to operate.

daughters, he can also often be found coaching.

“Coaching builds work ethic, and preparing for a game is like preparing for a season,” said Brent. “Every player and employee plays a critical role in the success of the goal.”

“I’m encouraging our members to challenge us—in all divisions. To live out our cooperative identity of being an essential business partner, we must meet our growers where they’re at. Each owner is unique, we want to work with them on customizable solutions that are tailored for their operations today and well into the future.”

BRENT DEPPE

Brent officially took over the CEO role in March but remains dedicated to the Key Agronomy team as they enter peak planting season. “My first priority will be to find my replacement as Agronomy Division Manager, because it’s such a critical role and we must continue our best-in-class agronomy services,” he said. “The next six to nine months will be spent working with staff and the board on strategic planning by division to set goals and position your cooperative for future success.”



Brent with his wife, Farrah, and their daughters.

Interns Unite!

EACH SPRING, we welcome a fantastic group of interns from all over the Midwest to the Key Cooperative family. We always look forward to the opportunity to walk with them as they develop their skills. We’re thrilled to play a role in their future success!

Meet our 2026 interns:

- Ben Bailey, Le Grand
- Caleb Cook, Sully
- Grant D’Lamater, Newton
- Colton Dunblazier, Le Grand
- Cole Higgins, Nevada
- Trevor Huegerich, CENTROL
- Kale Lande, Story City
- Williams Licht, S14/Story City
- Tyler Machin, Grinnell
- Kenton Niehouse, Kelley
- Brookelyn Rahner, Nevada/Zearing
- Alexandra Tiernan, S14
- Lucas Tjernagel, S14





Key Cooperative to Open New 24-Hour Fuel Station in Zearing

By Scott Richardson, Energy Division Manager, Scott.Richardson@keycoop.com

LAST SUMMER, Key Cooperative was presented with the opportunity to purchase a local fuel station when the owners of Lincoln Heights Station in Zearing decided to exit the retail fuel business. Already having an agronomy and grain elevator presence in the community, Key thought adding a modernized 24-hour fuel station with more options would greatly benefit the community and local producers.

The site is located at a major intersection in northeastern Story County, along Highway 65 running north and south and Highway E-18 running east and west. Key's newly rebuilt grain elevator is located on E-18 just east of town—a few miles from the new fuel station.

Construction is currently underway to update the underground fuel lines, add new above-ground fuel storage tanks, install a lighted canopy with a digital price sign and add new concrete on the widened driveway. Once complete, the site will offer new gasoline dispensers featuring E15 and regular, non-ethanol, unleaded gas products.

The diesel dispenser islands will be upgraded to include new dispensers offering premium on-road and off-road diesel options for both over-the-road trucks and off-road ag equipment. Both diesel islands will be lit with new LED light poles and spaced wide enough to accommodate all forms of traffic, including semi-trucks and tractors. All the new dispensers will offer the latest payment technology and security options, including tap-to-pay, Apple Pay, Key Cooperative's local fuel card and all major credit cards. The site will operate 24 hours a day, 7 days a week and will offer

a \$.06 per gallon discount on all products purchased with the Key Cooperative fuel card (available to anyone who has an open credit account with Key Cooperative).

We anticipate the project to be completed toward the end of May or early June, though recent spring weather has slowed progress. Once completed, we look forward to hosting a grand opening event for the public. The former storefront—which housed the Oil Press restaurant and Knotted Dough & Co. bakery—will be used as a storage site for Key Cooperative's seasonal equipment at this time.

Your fuel choice matters. When you stop at a Key Cooperative fuel station, you can rest assured you're doing business with a local company, not a major chain. We know what's in our fuel, and we stand behind the quality of each product. As your local cooperative, we're community-focused and make it a priority to be good neighbors,

investing in hometown projects and student scholarships. Every time you fill up at a Key station, you're not just getting fuel—you're supporting area farmers and your community! ●



As your propane supplier, we take pride in helping keep your propane tank in tip-top shape!

If you're interested in having your tank painted, call our Energy Team at 800-469-1040, or your Key location.



Before and After!

Summer Farm Oil Fill Discount

Let us top off your bulk oil tank and we'll give you \$0.25 off per gallon!

Delivery dates: **June 1 - 5, 2026**

Call Riley to order by May 26: **641-594-8119**

Offer Valid On:
Cenex® TMS 15w-40 Diesel Engine Oil
Cenex® HTB Tractor Hydraulic Fluid
20 Gallon Minimum Required



Celebrate Summer

This summer, enjoy special pricing of \$16.99 on 20 lb. grill cylinder exchanges at Key!

Special pricing available during:

**Memorial Day
Father's Day
Independence Day
Labor Day**



Visit keycoop.com for details!

**Special pricing applies to 20 lb. cylinder exchanges only; no other sizes qualify.*



Your Crop's Secret Weapon

Making smart sidedress decisions in 2026

By Landon Van Dyke, Conservation Agronomist, Landon.VanDyke@keycoop.com

NITROGEN PRICES might be painful right now, but don't let that scare you away from one of the smartest moves you can make this season: sidedress applications. The last thing you want to do is discount it and hope for the best. Every year throws curveballs, and the farmers who come out on top are the ones who stay ready to respond.

The key is having a sharp, well-thought-out game plan from the start. For many operations, that plan still includes sidedressing nitrogen. Why? Because it delivers the nutrient right when the crop is hungry and growing fast, hitting the sweet spot for both maximum yield and responsible stewardship.

Deciding whether, when, and how much to sidedress isn't guesswork. You must answer these critical questions:

- What nitrogen have you already applied (fall, pre-plant, pre-emergence, or at planting)? What form of nitrogen was it (urea, NH3, UAN, Pivot Bio, manure)? At what rate was it applied?
- Did you use stabilizers or not?
- What specific hybrid did you plant?
- What were the planting conditions when that seed went in the ground?
- What is your current financial position?
- What weather patterns and critical thresholds are ahead?
- What is your soil type, and what are its characteristics?
- Are there opportunities to use variable-rate technology?

Every farm is different, so the best move is to sit down with me or your Key Cooperative Agronomist to build (or tweak) a plan that fits your fields and your goals.

And don't forget sulfur! It's still one of the most underapplied macronutrients in Iowa, yet corn loves it. Emerging research shows soybeans benefit too.

Think of it this way: Nitrogen is the weightlifting that builds the size and strength of your corn plants. Without enough N, you simply won't push big yields. But sulfur is the protein. You can lift all day long, but without enough protein, you'll never reach your full potential. Get both working together at the right times and you'll see what a truly exceptional crop looks like. For a visual reference, picture Sylvester Stallone in his early Rocky days versus Dwayne "The Rock" Johnson at his peak.

This isn't just about protecting your input dollars—it's about unlocking the kind of performance that turns a decent year into a standout one. Let's make sure your crop has everything it needs to flex its full potential. ●

Thursday, July 30, 2026

8:00 A.M. Check In
9:00 A.M. Shotgun Start

Westwood Golf Course

3387 Hwy. F48 W
Newton, Iowa

*New location
and details!*

For questions, contact Sara Clausen
at Sara.Clausen@keycoop.com
or 515-388-8030.



**Reserve Your Spot
by July 15**

Registration Fee:
\$35.00 Per Golfer (includes cart)

**Join us for fun
on the course!**

Lunch, Flight Prizes,
Hole-in-One Contest

2026 Member
Golf Outing



*Register your
team here!*



You can also register at keycoop.com/golf.

Meet the Fenner Family

Passing a love of beef production to the next generation

By Sara Clausen, Director of Communications, Sara.Clausen@keycoop.com

THIS BEEF MONTH, we're introducing you to the Fenner family from Grinnell. Levi and Ashlee are raising their daughters to be cattlemen ... and they're catching on fast! Both Laikyn (11) and Abbi (13) are fairly new to the beef showing experience. They're set to participate in the Poweshiek County Fair and are already spending every day with the calves they plan to show.

"My favorite part is combing and drying them during the fair," said Laikyn.

"I learn a lot from the other people showing at the fair," added Abbi. "It's also really fun to hang out all day at the fair."

The Fenners' cow-calf operation has grown over the years. In fact, it's more than doubled this year as they continue to refine their Simmental Angus herd. "The

girls do all the evening chores for their calves," said Levi. "Laikyn recently helped our vet deliver a calf by C-section too!"

Though Levi grew up with cattle, his daily focus has been on his auto repair business. But thanks to the growing interest of his family, he's investing more time, energy and resources into the cow-calf operation.

"We purchased a new camera system this year," he said. "If we can save one calf, the camera is worth it!"

They're also beginning to DNA test and record their calves with the American Simmental Association. "The fastest way to improve our genetics is to purchase specific embryos," said Levi. "This is also the first year we will be implanting a portion of our herd." ●

As Iowans, we take our beef seriously. So seriously, in fact, we dedicate an entire month to celebrating our beef producers and the local restaurants cooking up their high-quality beef products. Don't miss out on all the excitement—visit iabeef.org and follow the Iowa Beef Industry Council on social media for a whole month of activities around the state!



Beef Feed Promotions

**BOOK THROUGH
MAY 31, 2026**

Spring Calf Creep Booking Program

- Booking options now available for Purina® RangeLand® Calf Creep B90 pelleted calf creep supplement.
- For best pricing, book and pick up product by May 31, 2026.
- Bulk calf creep products can be picked up at our Grinnell, Barnes City, Newton or Gilbert locations. Bulk products can also be delivered to your farm.

Spring Mineral Program

- Special pricing now available on a variety of Purina® Wind and Rain® mineral products.
- For best pricing, purchase and pick up by May 31, 2026.
- Fly control products are encouraged during the upcoming summer season.
- Pricing options include booking, take early delivery, or prepay for delivery at a later time.

QLF® Ignite Beef Tubs

- Receive special pricing on QLF® Ignite Beef Tubs for a limited time.
- Book by May 31, 2026. To receive the best pricing, pick up by May 31.
- Book today and take what you need, when you need it!
- All tubs weigh 200 pounds.

Justin Crocheck | 515-291-0763
Senior Cattle Consultant

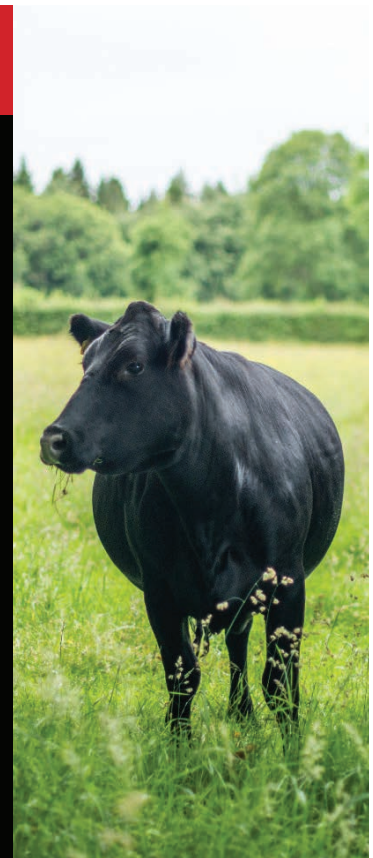
Matt James | 641-236-6565
Feed Division Manager

Jim Hawkins | 641-990-8964
Lifestyle Feed Sales

Howard Vroom | 641-660-4538
Feed Sales

Kelcie Carpenter | 515-520-1962
Key Cooperative, Gilbert Feed Sales

Renae Schumacher | 641-791-0740
Newton Feed Sales



Congratulations Graduates!



Trevor Britten
Roland-Story High School



Sydney Bruxvoort
Pella Christian High School



Drew Fausch
North Polk High School



Delaney Good
Boone High School



Macey Heishman
BGM High School



Gabe Hicks
Gilbert High School

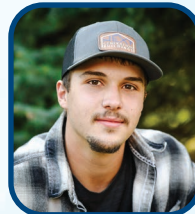


Gabriel Jonas
Roland-Story High School



Julia Mortvedt
Ames High School

Community Scholarship Recipients



Blake Obrecht
Colo-Nesco High School



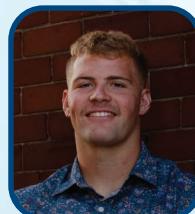
Addison Van Wyk
Pella High School



Stella Heithoff
Roland-Story High School



Abby Hoefing
Winterset High School



Dawson James
Lynnville-Sully High School



Keely Oberender
Roland-Story High School



Logan Tegeler
Boone High School



Molly Vande Lune
Southeast Polk High School

Family Scholarship Recipients



PRST STD
AUTO
U.S. POSTAGE PAID
PERMIT NO. 371
NEWTON, IA 50208

KEY CONNECT™

WE RECENTLY INTRODUCED KEY CONNECT, a powerful digital farming resource. The Key Connect platform is designed to give you instant, secure, around-the-clock access to essential information—allowing you and your operation to connect with Key Cooperative in any season. It's accessible either online or via an app.

With Key Connect, you can:

- Interact with grain offers and contracts, including electronically signing grain contracts
- Review statements and invoices or pay a bill
- Connect to your field and farm data
- Receive notifications on account activity

Register to view
your account
activity or pay
your bill online!



Spring lightning illuminated the sky as Jason put equipment away on April 14 in Roland.

Would you like to see one of your photos featured on this page?

The *Connections* photo contest is open to any member or customer who receives our newsletter. One winning photo will be selected and placed in the newsletter. Photos must feature agriculture, ag events or rural settings; Iowa-based scenes are preferred. Photos must be submitted by the tenth of each month in order to qualify for the following month's newsletter. Please include your name, address, phone number and email address with your submitted photo(s).

Submissions may be emailed to Sara.Clausen@keycoop.com.

Key Connections is sent to you courtesy of Key Cooperative. Please send comments or suggestions to Sara.Clausen@keycoop.com or call 515-388-8030.

Our Board of Directors

Bryce Arkema, President
Mike Engbers, Vice President
Brian Larsen, Secretary
Brian Lowry, Assistant Secretary
Ryan Bell, Treasurer
Eric Henry, Associate
Todd Van Manen, Associate

Chris Davidson, Associate
Chad Hafkey, Director
Dave Hill, Director
John Koop, Director
Lucas Tjelmeland, Director
Nathan Voight, Director



PHOTO CONTEST WINNER

Welcome to the Light Show

Submitted by Jason Goodmanson, Key Cooperative Location Manager