



# OUTLAST™

## GASTRIC SUPPORT SUPPLEMENT

FORMULATED TO SUPPORT GASTRIC HEALTH & PROPER pH

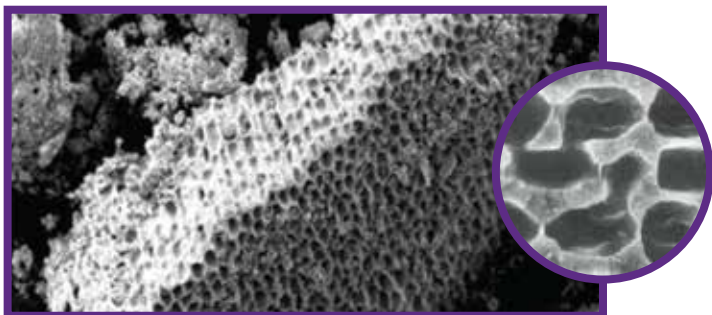
- Supports **GASTRIC HEALTH** for optimal performance
- Designed to **SUPPORT PROPER pH** in stressful situations
- FLEXIBLE FEEDING** as a snack or top-dressed

It is estimated that up to 90% of active horses experience gastric discomfort, affecting health, attitude, and performance. Support your horse's gastric health and comfort by adding Outlast™ supplement to your feeding program.

Testing in a simulated gastric environment shows Outlast™ supplement:

- ACTS FASTER**
- LASTS LONGER**
- OUTPERFORMS**

Outlast™ supplement contains a proprietary mineral complex with a unique honeycomb structure. The porous structure of this natural and bio-available source of calcium and magnesium increases its surface area and enhances its capacity to support proper gastric pH.



Electron microscope images showing the porous structure of the proprietary mineral complex

### Designed to Support Gastric Balance

Purina's PhD Equine Nutritionists have spent hundreds of hours (and counting) researching Outlast™ supplement at our state-of-the-art nutrition research farm in Missouri

**520** / **7**

PhD Research Hours

### Field-tested & Horse-approved

As part of our rigorous testing process, hundreds of performance horses around the country participated in our nutrition research

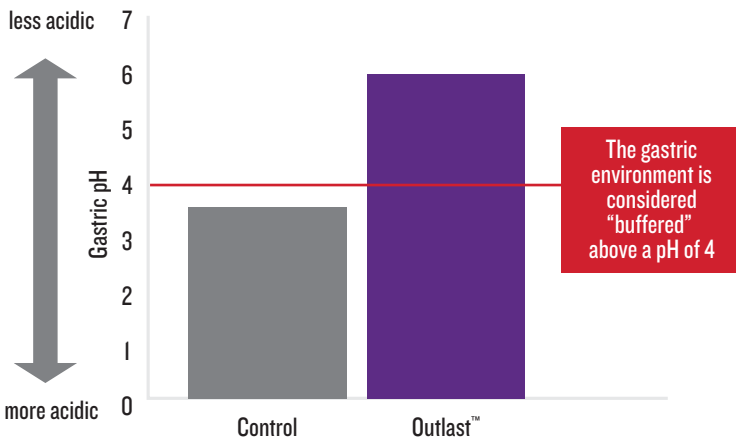
**95492**

Outlast Supplement Feedings

Purina® Outlast™ Gastric Support Supplement was developed™ by our PhD Equine Nutritionists to support a healthy gastric environment. Take a look at what makes Outlast™ supplement unique:

### Equine gastric pH is less acidic in horses supplemented with Outlast™ supplement

GASTRIC pH 2 HOURS AFTER SUPPLEMENTATION

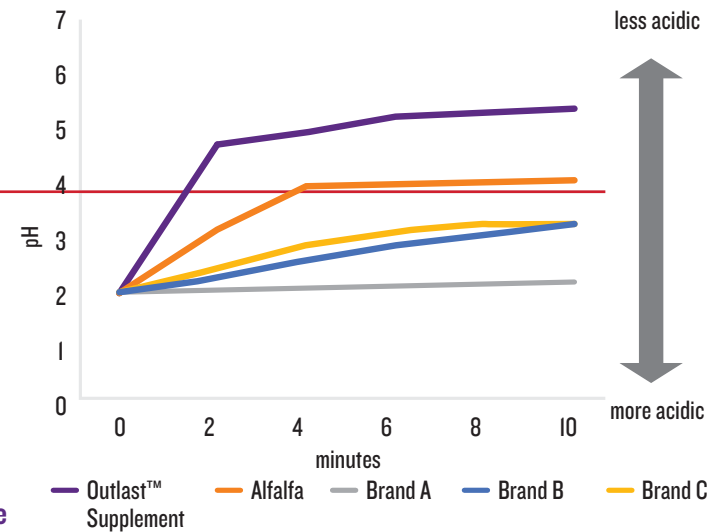


\*The Control supplement and Outlast™ supplement contained similar nutrient profiles.

To learn more about the research behind Outlast™ supplement and the Purina® Equine Gastric Health Program, visit [www.FeedOutlast.com](http://www.FeedOutlast.com).

### Outlast™ supplement buffers faster and to a higher pH than other products on the market

BUFFERING SPEED IN A SIMULATED GASTRIC ENVIRONMENT



### Amounts of Outlast™ Supplement to Feed per Top-dress at Meals and/or Snack(s)

Horse Bodyweight (lbs)	Supplement (g by weight)	Number of Cups* per Meal or Snack
500–750	100	0.75
750–1,000	150	1.00
1,000–1,250	200	1.25
1,250–1,500	250	1.50
1,500–1,750	300	1.75
1,750–2,000	350	2.00

\*Standard 8-oz. kitchen measuring cups when measured by volume.

### Guaranteed Analysis:

Crude Protein (Min)	13.00 %
Crude Fat (Min)	1.10 %
Crude Fiber (Max)	17.00 %
Acid Detergent Fiber (ADF) (Max)	21.00 %
Neutral Detergent Fiber (NDF) (Max)	35.00 %
Calcium (Ca) (Min)	4.00 %
Calcium (Ca) (Max)	5.00 %
Phosphorus (P) (Min)	0.45 %

The proprietary ingredient in Purina® Outlast™ Gastric Support Supplement conforms to the rules of competition and racing when fed as directed.

### Feeding Directions:

- This product is designed to be top-dressed on your horse's regular feed ration and/or fed as a "snack" within one hour prior to engaging in a potentially stressful event such as exercise, traveling, confinement, etc.
- The feeding rate for both the top-dress and the "snack" is 20 g per 100 - 125 lb. body weight. For example a 1,000 - 1,250 lb. horse would receive 200 g of the supplement per feeding. This feeding rate is equivalent to 1.25 cups (10-oz with a dry-good measuring cup). See chart for specific recommendations.
- Typical feeding rate is 3-4 times per day—top-dressed with each meal and a snack 30-60 minutes prior to a stressful event. Do not feed more than 6 times per day at the recommended rates for your horse's weight.
- Meals of Ultium® Gastric Care Horse Formula or Race Ready® GT Race Horse Formula include Outlast™ Gastric Support Supplement, so each meal will count as one Outlast™ supplement top-dress/snack.

### Ingredients

Sun-cured alfalfa, wheat middlings, seaweed-derived calcium, cane molasses, magnesium oxide, citric acid.

### GUARANTEE

Purina appreciates your business. If for any reason you are not satisfied with the quality of this product, please return it to your Purina® Horse Retailer for replacement or a full refund.