

# SCHOOL



# BUS SAFETY TIPS

## Teach children how to stay safe around the school bus:

- Stand at least six feet (three giant steps) from the approaching bus while waiting at the bus stop.
- Wait to board the bus until the driver says it's safe.
- When getting off the bus cross in front of the bus and make sure the bus driver sees you.
- Always watch for oncoming traffic when approaching or leaving the bus.

## How drivers can keep kids safe around the school bus:

- When driving in neighborhoods with bus stops, schools and school zones (20 MPH). Watch out for children walking or bicycling to school.
- **SLOW DOWN** when approaching school buses on backroads where they could be making stops.
- Obey all school bus laws. Obey the "flashing red signal."
- Yellow flashing indicates the bus is preparing to stop to load or unload. You should prepare to stop.
- **RED** flashing lights and extended stop arms indicate that the bus has stopped, and that children are getting on or off the bus. Motorists must stop and wait until the red lights stop flashing, the extended stop sign is withdrawn, and the bus begins to move before they can pass the bus.

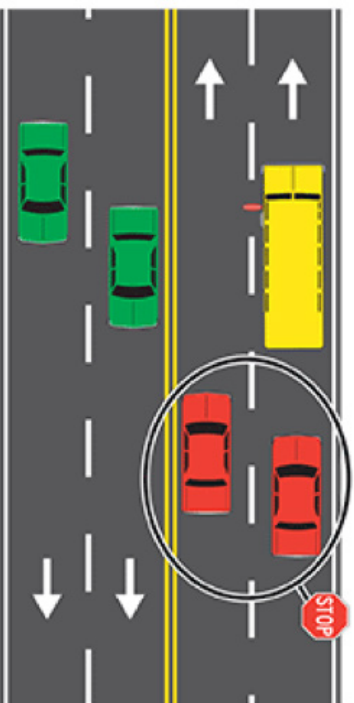
WORKPLACE  
SAFETY BEGINS AT  
**HOME**

*with Sunrise Cooperative*

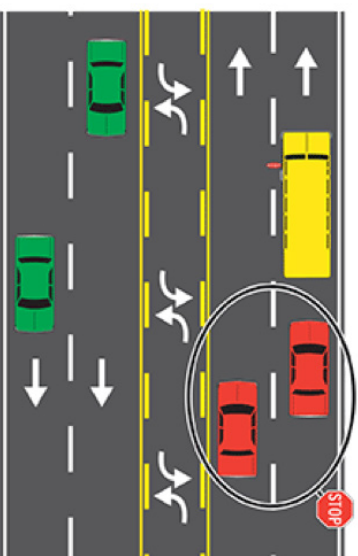
# SCHOOL BUS SAFETY ON THE HIGHWAY



**Sunrise**  
COOPERATIVE  
*Success grows here.*



Four-lane highway



Four-lane highway with  
center turn lane